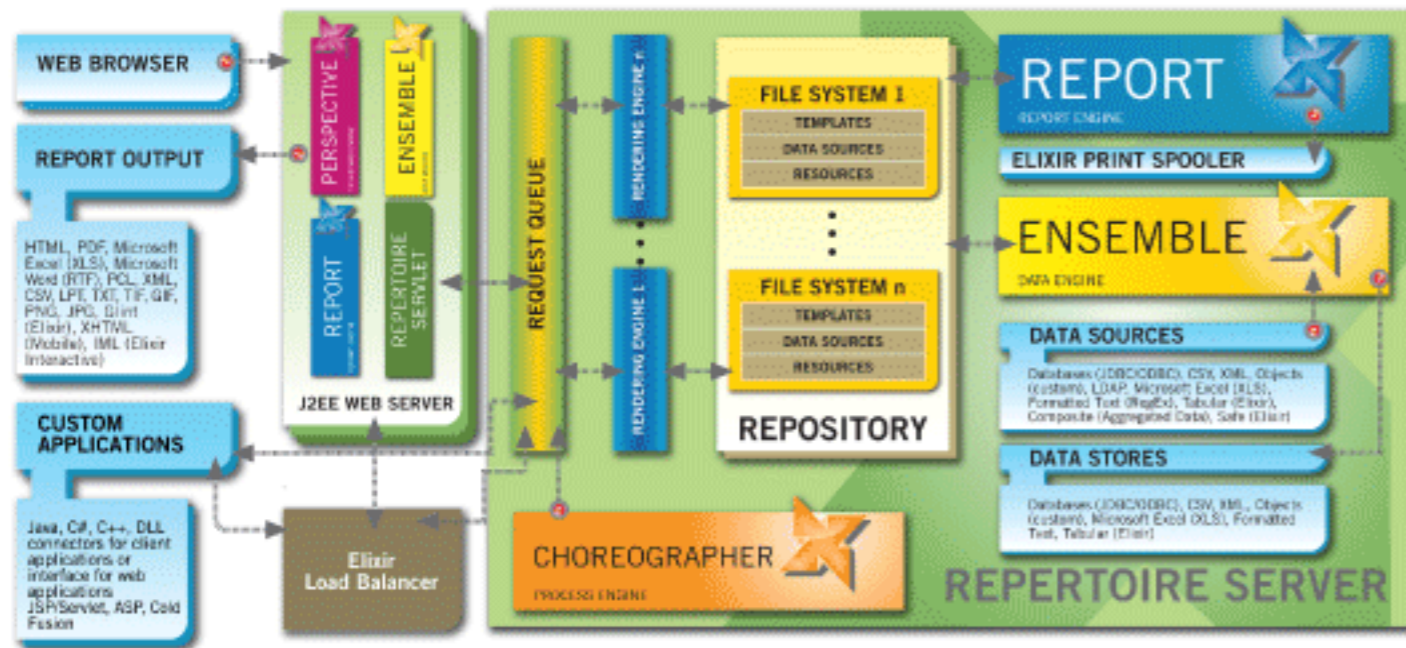


Unified Business Intelligence Architecture



Elixir suite of products runs on a common underlying Elixir Repertoire Unified Architecture as follow:

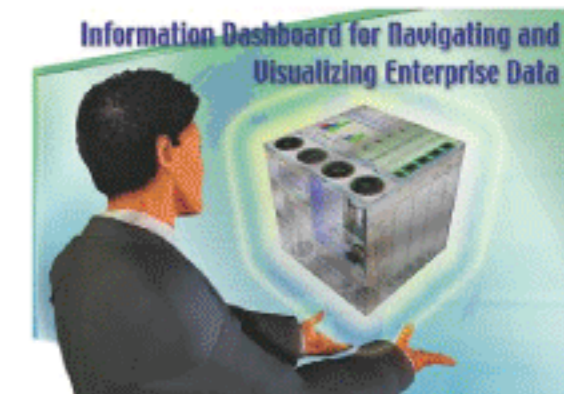
- ETL and data aggregation with Elixir Ensemble, enterprise reporting with Elixir Report, information dashboard with Elixir Perspective, and scheduling and process activation with Elixir Choreographer.
- Each product layer can be enabled independently of another depending on the license key applied.
- Common repository with multiple options for localized personal access, compressed file for read-only, version controlled web-based sharing with WebDAV, and remote secured repositior.
- Flexible parameterization and extensibility with custom JavaScript functions and import of external Java program.
- High performance, scalability, and availability with parallel processing of data and report generation, with add-on option of software load balancer.
- Automate data processing and report generation with triggers based on time, data, file folder, and logic, including invoking external program.
- Multiple deployment mode of embedded or standalone server with API connectors for Java, .NET DLL for C# and C++, as well as a web application (WAR) supporting URL interface which Elixir Perspective uses for dynamic dashboard rendering.



ELIXIR PERSPECTIVE

Navigation and Visualisation

Having a 360 degree view of an organization's operations is imperative in this fast-moving era. The need to navigate through disparate data sources, internal or external, and visually analyze aggregated or summarized information in a timely and flexible manner is critical to all levels of corporate users, be it executive, middle management or operational.



Elixir Perspective meets the information needs of today by enabling navigation and visualization of live enterprise-wide data to empower the decision makers with timely, accurate, and actionable information. With flexibility in mind, an end user can dynamically customize the views and contents to adapt to changing business requirements. Various performance management applications for measuring and monitoring business activities can be developed and customized to suit changing requirements without long development cycle or deep technical know-how. Organizations can truly be enabled to become an Intelligent Enterprise, where every user can leverage the information available for competitive advantages.

Information Dashboard for End User Data Navigation & Visualization



Operating Requirements

Supported Platforms

Windows, Solaris (including 10), AIX, Linux, Macintosh (including OS X) and any other Java SE version 1.4 and above compliant platforms.

Systems Requirements

Minimum of 128MB RAM. Exact memory usage depends on operation requirements.



License Editions

Elixir Perspective Professional Edition includes the Perspective designer for a single user to design dashboards, using pre-built data sources and reports. For a combined designer package one can opt for the Elixir Repertoire Professional Edition.

Elixir Perspective Server Edition extends the Professional Edition with server-side processing to perform centralized dashboard rendering, delivering interactive data, report, chart and Cube views through the Elixir Repertoire Web Application using AJAX.

Product Inquiries: sales@elixirtech.com

Corporate Email: info@elixirtech.com

Website: <http://www.elixirtech.com>

All trademarks and registered trademarks belong to the respective owners.

Feature Highlights

- Develop and Deploy Information Dashboard for Effective Performance Management
- Navigate Contents with Table, Cube, Chart and Report Views laid out on Cards
- Analyze with Dynamic Cube with User Definable Dimensions and Measures
- Extract and Present Information with Professionally Generated Reports



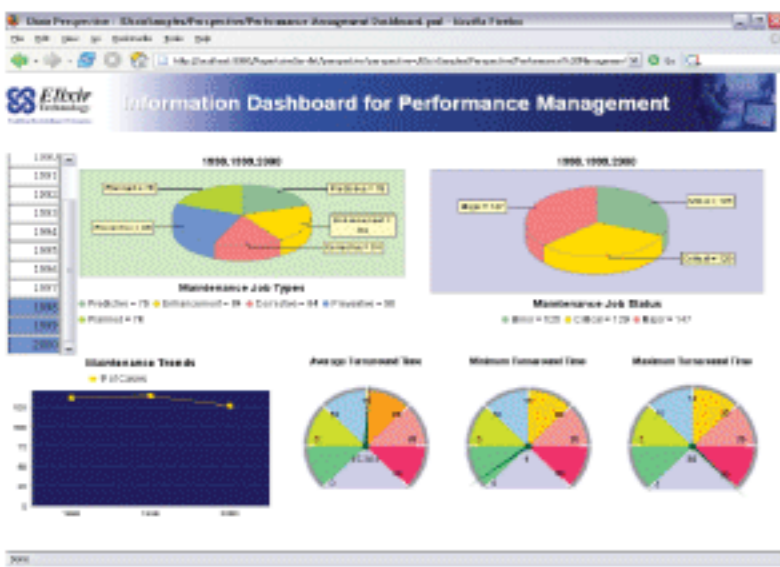
Elixir Perspective Features

Elixir Perspective empowers the decision makers with a live direct access to actionable information where the various views and contents can be visually and interactively designed without requiring much technical know-how.



Develop and Deploy Information Dashboard for Effective Performance Management

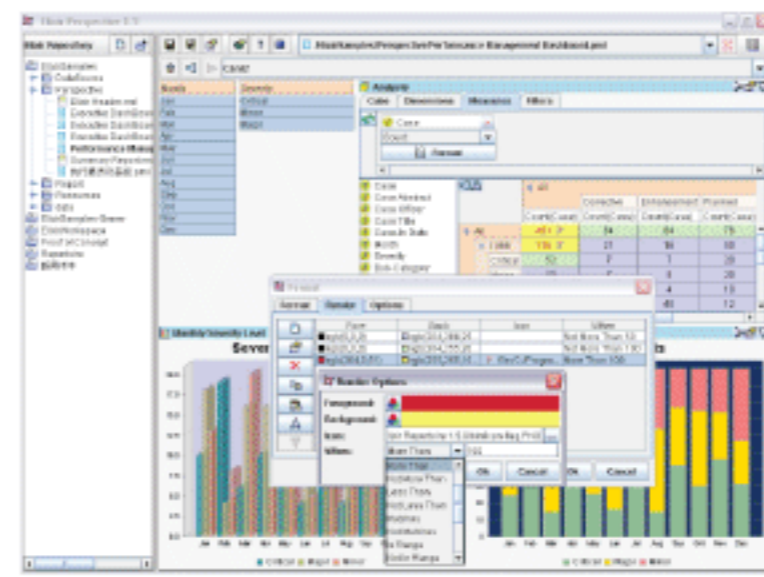
- Easy and rapid development of dashboards for Enterprise Performance Management
- Empower executives and managers with critical information for performance monitoring and decision support
- Enable enterprise agility by empowering information workers with user definable dashboards



Performance Management Dashboard

Analyze with Dynamic Cube with User Definable Dimensions and Measures

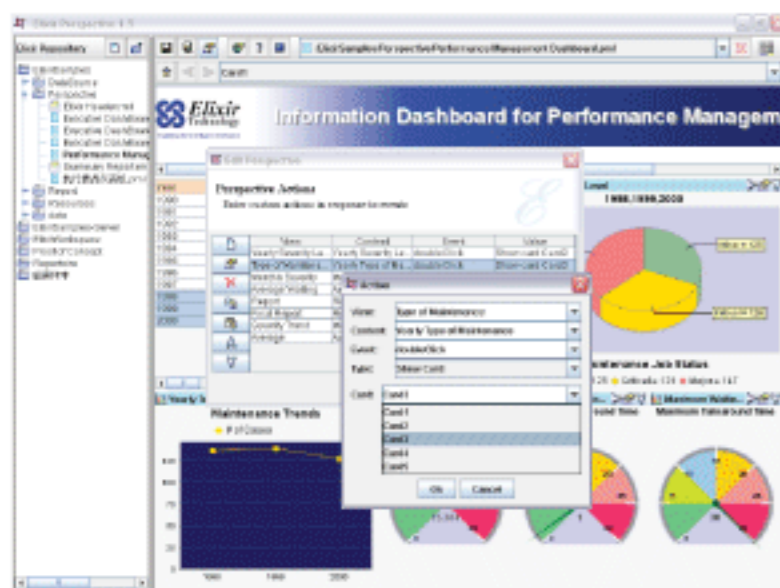
- Drag-and-drop to create multi-dimensional cube view with hierarchies, dimensions, measures and filters
- User definable conditional highlighting with color and icon for unlimited number of condition sets
- Extensibility for incorporating external custom functions in cube measures



Interactive Cube View with Conditional Highlighting

Navigate Contents with Table, Cube, Chart and Report Views laid out on Cards

- Organize contents with visual layout of table, cube, chart, and report views to form cards
- Link views with filter conditions to drill through databases, text files, spreadsheets, and application data
- Attach actions to card for navigation and publish to the web with "Just Works™" deployment



Attach Action to View and Content to Show Cards

Extract and Present Information with Professionally Generated Reports

- Dynamic data extraction and report generation based of content selection
- Generate reports to multiple output formats including PDF, CSV, Microsoft Word, and Microsoft Excel
- Automate auto-refresh of contents based on preset update period



Self-Served Data and Report Generation