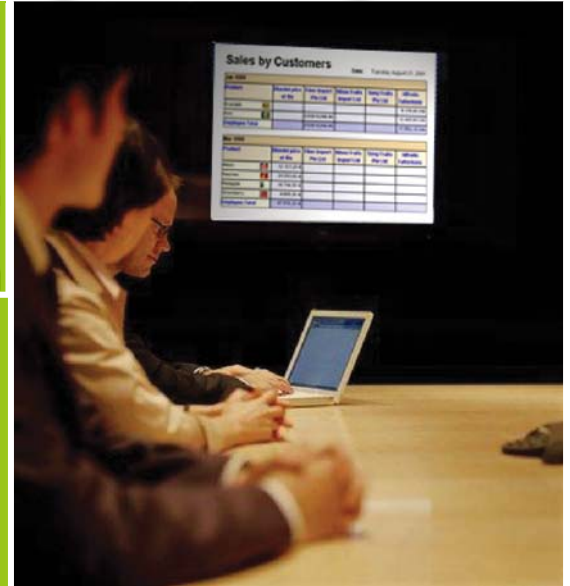




Intelligence  
On Demand



Integrated  
Business Intelligence  
Suite



Enabling the Intelligent  
Enterprise



# Business Intelligence on SOA

## NOW supporting Web 2.0

Elixir Repertoire™ 7 takes Business Intelligence to the next level of open interoperability by fully embracing the Service-Oriented Architecture (SOA), making available Business Intelligence capabilities as Web Services. Through its REST APIs, web-enabled applications can easily interface with Repertoire Server, regardless of the application front end in use. Riding on the wave of Web 2.0, Repertoire 7 acts as the unifying business intelligence engine to power the new generation of enterprise applications.

Leveraging the platform-independent foundation services, one can incorporate business intelligence functionality into enterprise applications regardless of the programming languages used, including Java, .NET, Perl, AJAX, Ruby, Adobe Flex, etc. Key features including Information Dashboard, Enterprise Reporting, ETL, and Job Scheduling can be freely chosen and combined, offering senior executives, business analysts and technical developers a clear path to Intelligence On Demand, thus enabling the Intelligent Enterprise.

### Features Highlights

- ▶ Open Interoperability on SOA with REST APIs supporting Java, .NET, Perl, AJAX, Ruby, Flex
- ▶ Extraction-Transformation-Loading (ETL) and Data Aggregation, Cube and Cleansing
- ▶ Enterprise Reporting and Information Delivery for Web, Print and Mobile
- ▶ Information Dashboard for Data Navigation, Analysis, and Visualization
- ▶ Job Scheduling for Data Activation and Process Automation



# Intelligence on Demand



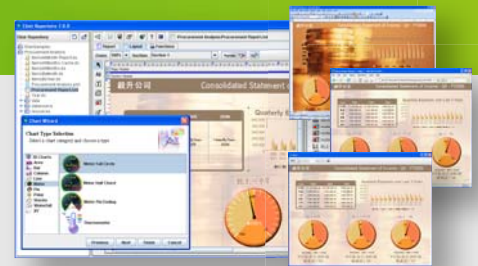
## Information Dashboard for Data Navigation, Analysis, and Visualization

- Develop and deploy Information Dashboard for effective performance management
- Navigate contents with Table, Cube, Chart and Report Views laid out on Cards
- Analyze with dynamic Cube with user-definable dimensions and measures
- Extract and present information with professionally designed reports



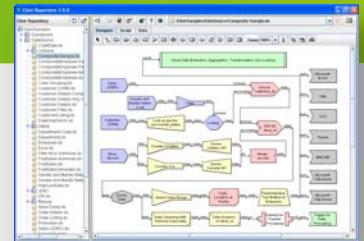
## Enterprise Reporting and Information Delivery for Web, Print and Mobile

- High performance operational report generation for multiple target delivery
- Rich graphical elements and intuitive report layout control
- Multi-lingual reporting with advanced multi-directional rendering
- Visual data logic design for extraction, aggregation, and transformation



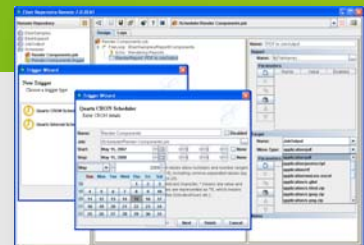
## Extraction-Transformation-Loading (ETL) and Data Aggregation, Cube and Cleansing

- Increase productivity with minimal learning curve where no programming or SQL is required
- Flexibility visual modeling interface for creating and editing data processing steps
- Powerful built-in data operations with JavaScript and support for custom functions
- Eliminate data errors and increase efficiency by automating with time, data and logic activation



## Job Scheduling for Data Activation and Process Automation

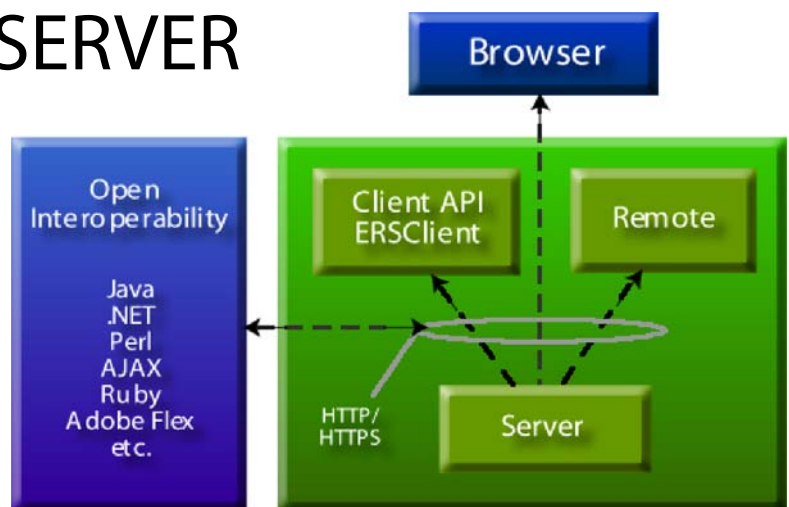
- User-definable logic for conditional task execution supporting sequential and parallel processing
- Retrieves data from Elixir data sources and system folder as input parameters for triggering
- Invoke Apache Ant tasks to execute external programs such as native database loader
- User-friendly visual interface for CRON and time interval triggers for advanced scheduling



# ELIXIR REPERTOIRE™ SERVER

## Open and Extensible SOA for Business Intelligence Web Services

- Open interoperability for Java, .NET, Perl, AJAX, Ruby, Adobe Flex, etc.
- Uniform interface with REST APIs for accessing server resources with GET, POST, PUT and DELETE operations
- Self-served web-based administration with SSO and access security control
- Remote designer client for instant server-side template editing and creation



Repertoire Server Architecture



For your free evaluation software, visit us at  
<http://www.elixirtech.com/download>

