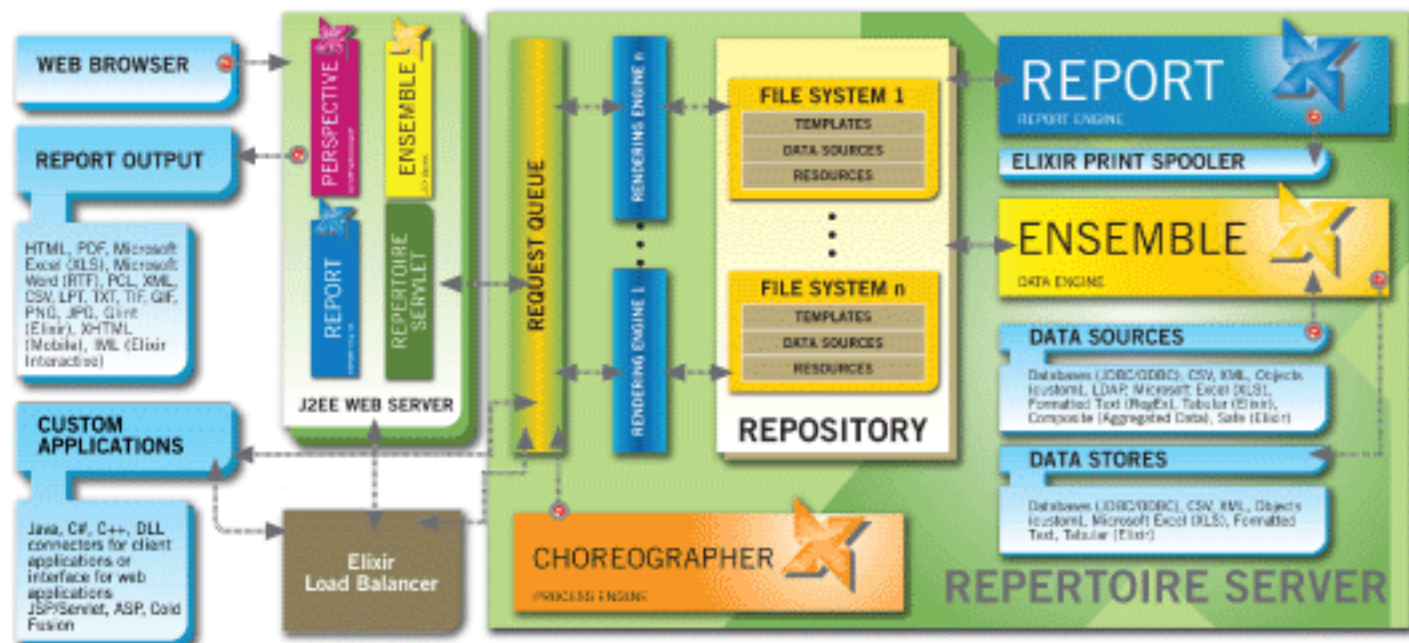


Unified Business Intelligence Architecture



ELIXIR REPORT

Presentation and Delivery

Corporate enterprises need timely and accurate visibility into business operations in this fast-changing environment. Actionable information must be presented and delivered to the right targets in the right forms. Designed for power and ease of use, Elixir Report brings unmatched price-performance to meet your enterprise wide reporting requirements.



Elixir suite of products runs on a common underlying Elixir Repertoire Unified Architecture as follow:

- ETL and data aggregation with Elixir Ensemble, enterprise reporting with Elixir Report, information dashboard with Elixir Perspective, and scheduling and process activation with Elixir Choreographer.
- Each product layer can be enabled independently of another depending on the license key applied.
- Common repository with multiple options for localized personal access, compressed file for read-only, version controlled web-based sharing with WebDAV, and remote secured repository.
- Flexible parameterization and extensibility with custom JavaScript functions and import of external Java program.
- High performance, scalability, and availability with parallel processing of data and report generation, with add-on option of software load balancer.
- Automate data processing and report generation with triggers based on time, data, file folder, and logic, including invoking external program.
- Multiple deployment mode of embedded or standalone server with API connectors for Java, .NET DLL for C# and C++, as well as a web application (WAR) supporting URL interface which Elixir Perspective uses for dynamic dashboard rendering.

Going beyond the conventional reporting feature set, Elixir Report comes built-in with data aggregation and transformation engine to enable complex data processing including Cube transformation and data cleansing. With enhanced advanced internationalization support, Elixir Report pushes the envelope for multi-lingual support to enable enterprises tapping into the increasingly globalized markets. Numerous innovative report layout controls deliver unsurpassed power to report developers, while keeping the ease of use and maintenance in balance.

Sporting a next generation Unified Business Intelligence Architecture, Elixir Report Server can be readily deployed to any major operating systems, integrating with various front end applications through Java, .NET, or web interface. Leveraging its high performance scalability and availability, enterprise of all sizes can truly deliver actionable information to users both internal and external, for all operational and managerial reporting needs.

Enterprise Reporting for Web, Print and Mobile Delivery



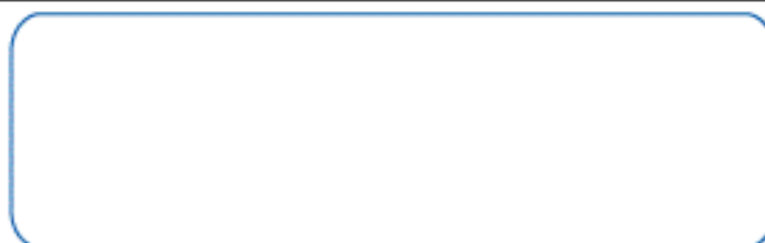
Operating Requirements

Supported Platforms

Windows, Solaris (including 10), AIX, Linux, Macintosh (including OS X) and any other Java SE version 1.4 and above compliant platforms.

Systems Requirements

Minimum of 128MB RAM. Exact memory usage depends on operation requirements.



License Editions

Elixir Report Professional Edition includes the Report designer for a single user to design reports and data sources including the composite data sources.

Elixir Report Server Edition extends the Professional Edition with server-side processing to perform centralized delivering only the report output to the client. A Web Application is included as optional front end application.

Feature Highlights

- Enterprise Reporting for Web, Softcopy, Print and Mobile Delivery
- Rich Graphical Elements and Intuitive Report Layout Control
- Multi-lingual Reporting with Advanced Multi-Directional Rendering
- Includes Elixir Ensemble functions for Extraction, Aggregation, and Transformation



Product Inquiries: sales@elixirtech.com

Corporate Email: info@elixirtech.com

Website: <http://www.elixirtech.com>

Elixir Report Features

Elixir Report empowers developers and power users with its rich functionality and versatility to address the information needs of a globalized market. It brings together a balance in power and ease of use for creating informative and maintainable reports.



Enterprise Reporting for Web, Softcopy, Print and Mobile Delivery

- ▶ Web reporting with HTML, PDF with encryption, Excel, Word through RTF, SVG, image and Elixir Interactive format for offline dynamic reporting
- ▶ Printed reports with multi-target print spooler and remote client printing and printer specific formats include Postscript, LPT, PCL, and TIFF for faxing
- ▶ Mobile reporting by using a Mobile Wizard to produce small sized drilldown reports viewable in any XHTML browser on a mobile device

On-Line Reports

Hardcopy

Business Documents, Invoice, etc.

Excel, RTF, CSV

Professional Reports

Form-based Documents, Barcode

Mailing Labels

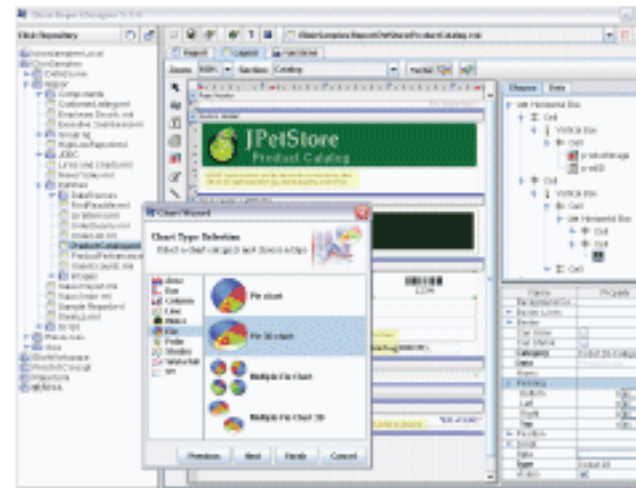
HTML

PDF

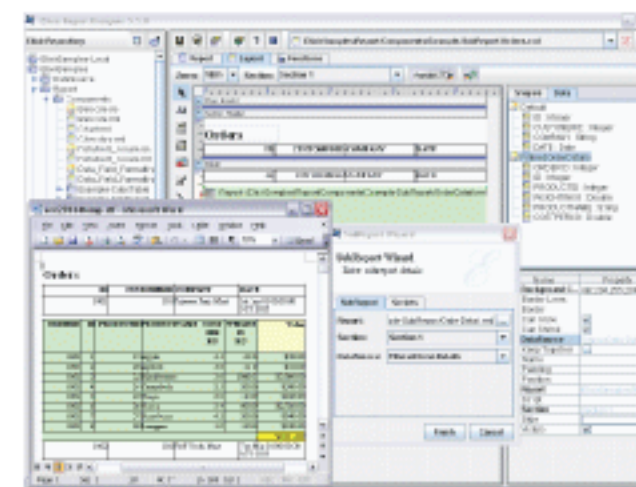
XML

XHTML Mobile

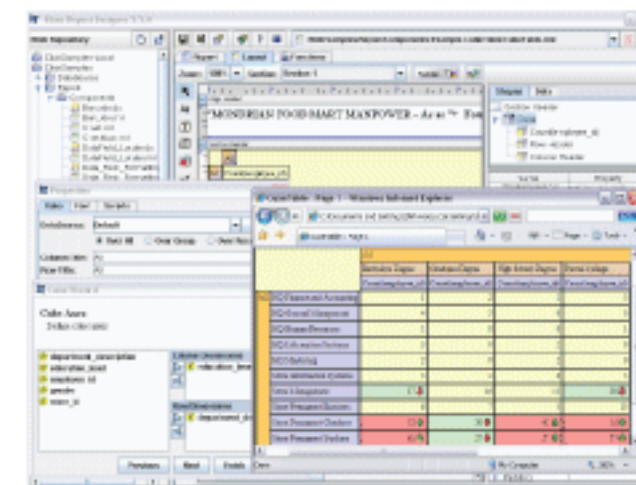
Wide Range of Report Output Options



Rich Graphical Elements



SubReporting for Master-Details



Cube Table with Highlighting

Rich Graphical Elements and Intuitive Report Layout Control

- ▶ Rich set of report elements supporting CSS style, barcode, SVG, charts, dynamic boxes, border control, color transparency, and external callback
- ▶ Flexible underlying structure supporting multiple section, page, and column layout, subreport, cube table, dynamic watermark, and JavaScript for conditional rendering
- ▶ Extract, aggregate and transform data from sources including any JDBC/ODBC compliant databases, text, Microsoft Excel, XML, LDAP and Objects

Multi-lingual Reporting with Advanced Multi-Directional Text Rendering



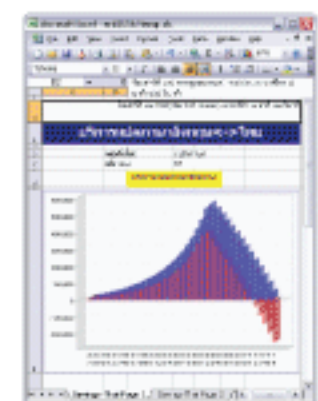
Right-To-Left Bi-directional Middle Eastern Text in HTML



Extended Unicode Support for HKCS in PDF



Vertical Running Top-Bottom-Right-Left Oriental Text in Elixir Viewer



Localized Date Formatting in Native Digits in Microsoft Excel