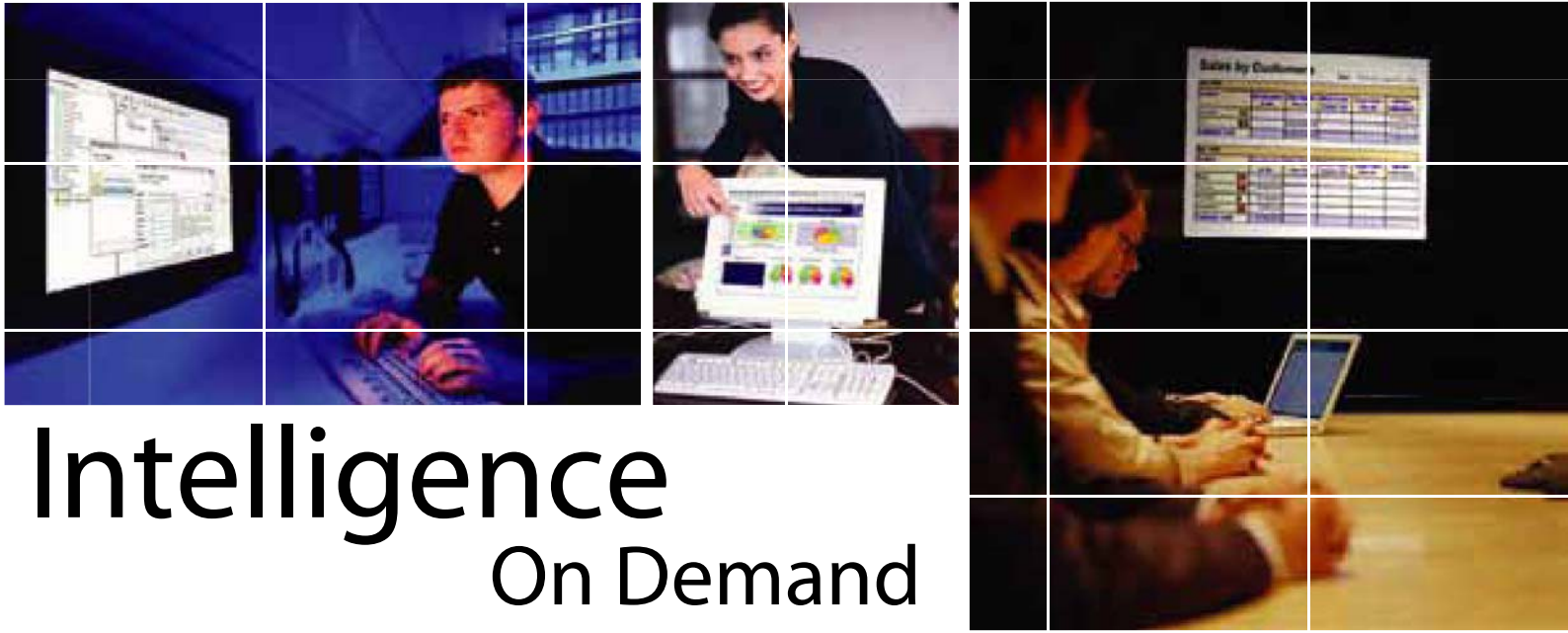




ELIXIR REPERTOIRE

Integrated Business Intelligence Suite



Intelligence On Demand



Using JDBC Data Source with
Microsoft SQL Server 2000

Using JDBC Data Source with Microsoft SQL Server 2000

The version of SQL server we are using in this sample is Microsoft SQL Server 2000 Desktop Engine (MSDE 2000) Release A which is the free version of SQL Server.

Elixir Repertoire can support connectivity to Microsoft SQL Server 2000 via Microsoft SQL Server 2000 JDBC driver, jTDS driver and JNetDirect driver. The driver we are using in this sample is JNetDirect driver which is downloadable from <http://www.jnetdirect.com/>.

Prerequisite

The prerequisites that are needed to ensure a successful connection to Microsoft SQL Server are listed below:

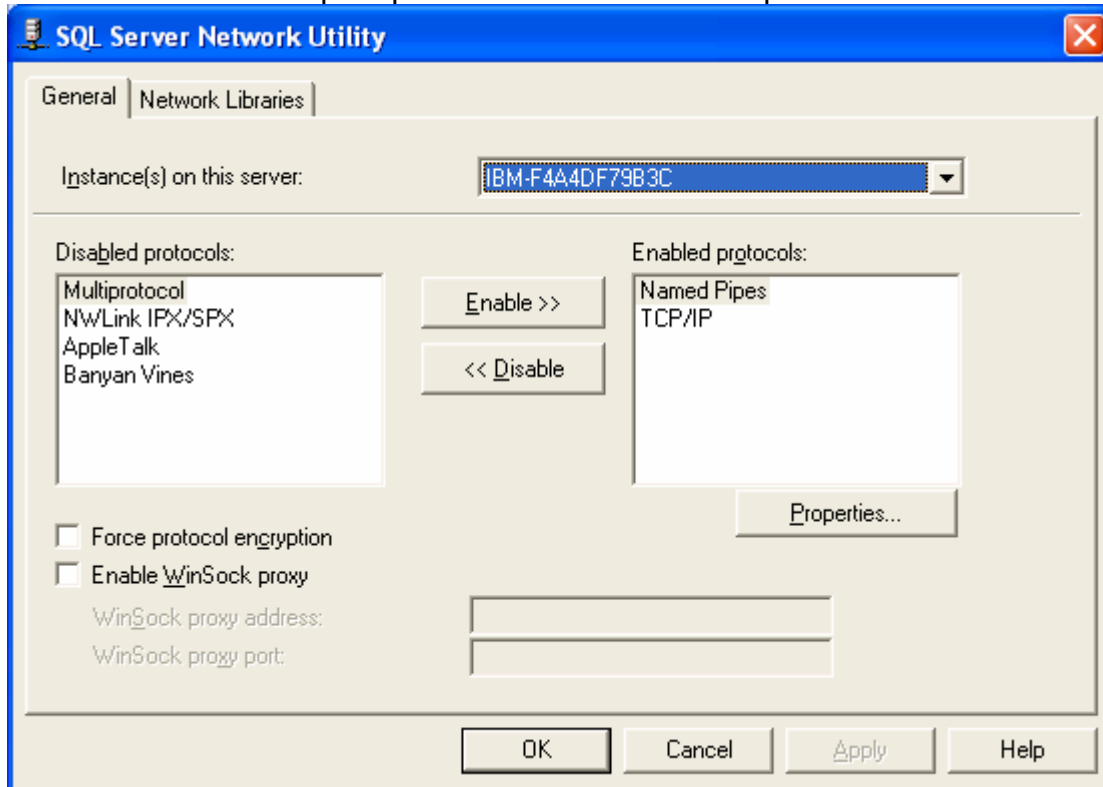
- 1) Enable mixed mode security when you install the server so that you can connect using user name and password.
- 2) The JDBC provider only works with the TCP/IP protocol. Enable the TCP/IP Protocol on both the server and client side and restart the server.

Configure the server

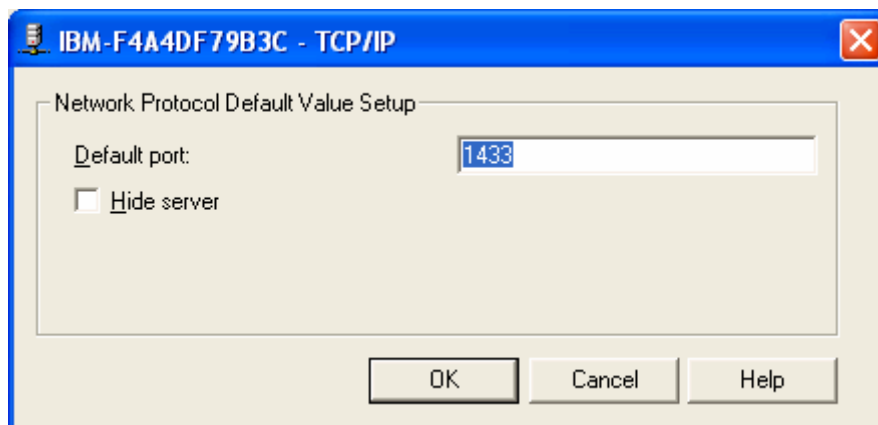
To run the SQL Server network utility, open a command prompt and type:

```
C:\>sqlnetcn.exe
```

Enable the “Named Pipes” protocol and the “TCP/IP” protocol.



Click on “Properties” on the “TCP/IP” protocol. Here, you will configure the default port MSDE will be listening on if you want network access. Default is 1433.

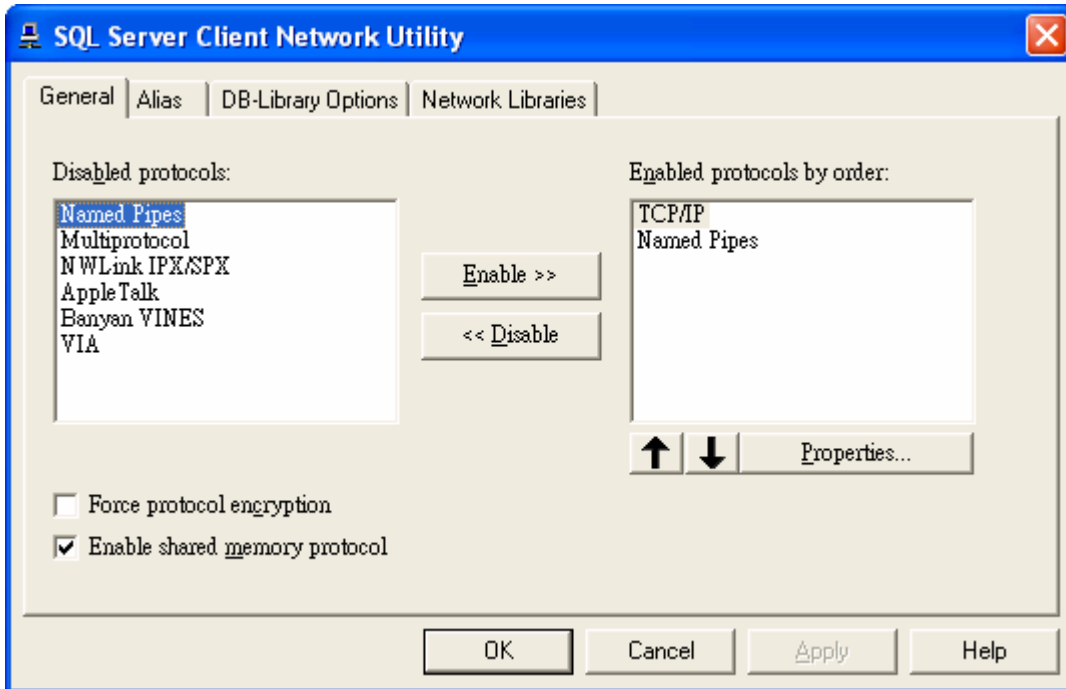


Configure the client

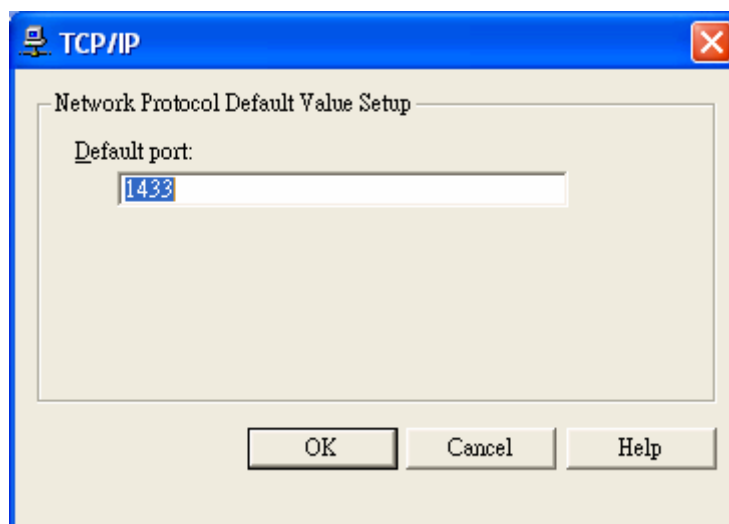
To run the SQL Server client network utility, open a command prompt and type:

```
C:\>cliconfg.exe
```

Enable the “Named Pipes” protocol and the “TCP/IP” protocol.

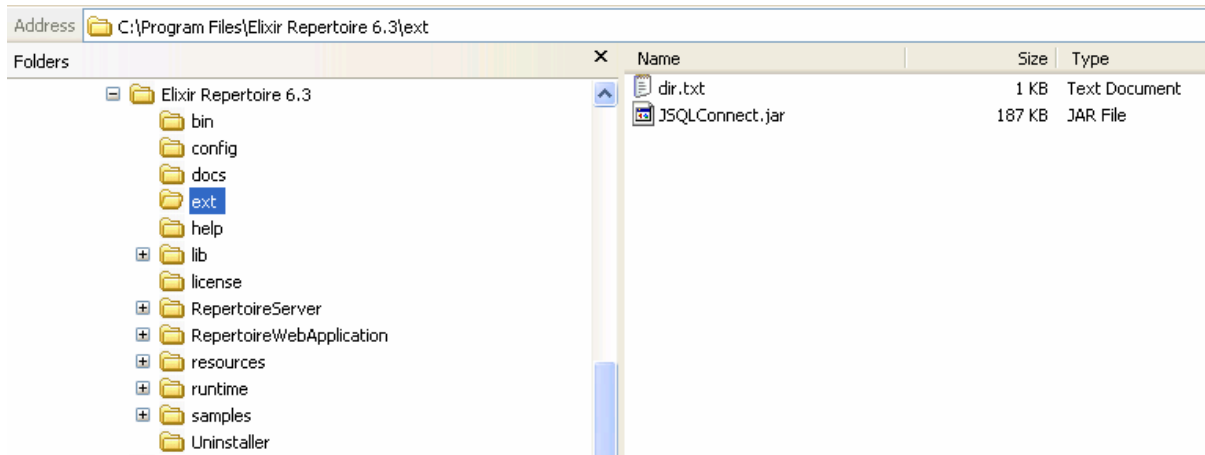


Click on “Properties” on the “TCP/IP” protocol. Here, you will configure the default port MSDE will be listening on if you want network access. Default is 1433.

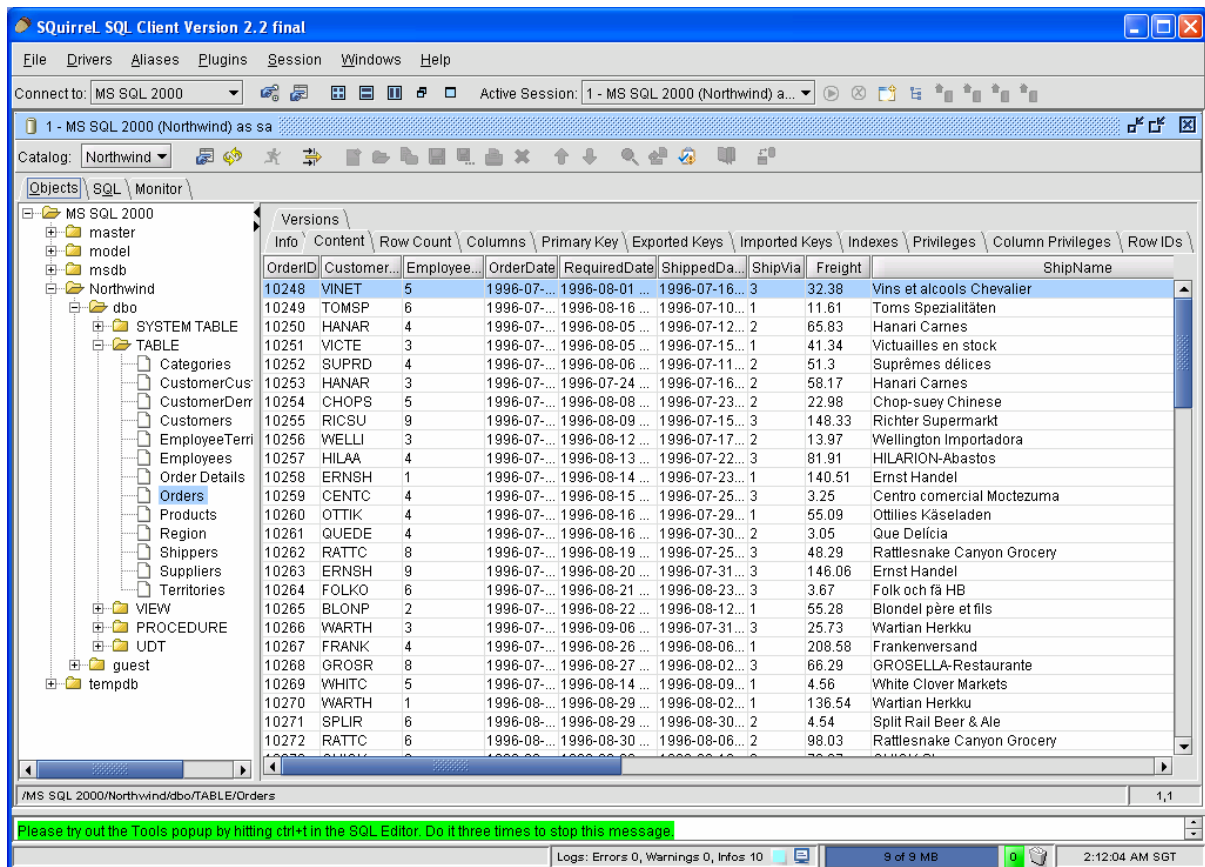


3) Download the JNetDirect SQL Server JDBC driver from JNetDirect web site.
<http://www.jnetdirect.com/>

4) Deploy the driver into Elixir Repertoire ext directory. You have to do the same if you are using Elixir Repertoire Server.



5) View the tables in a SQL Analyzer tool like Squirrel SQL Client which is downloadable from the Internet. This indicates you have successfully connected to MS SQL 2000.



Creating a JDBC Data Source in Elixir Repertoire to connect to MS SQL 2000

1) Add a JDBS datasource. The Datasource Wizard window opens.

Select JNetDirect DataSource from the dropdown list for Driver Suggestions. Driver field will be automatically populated.

Specify our server host name and the name of the database you are trying to connect to.

Input your User and password and click Next.

Define JDBC Datasource
Enter JDBC datasource parameters

Name: MS SQL 2000 Datasource using JNetDirect driver
Description:

JDBC JNDI Pool

Driver Suggestions: JNetDirect DataSource
Driver: com.jnetdirect.jdbc.JSQLDriver
URL: jdbc:JSQLConnect://localhost/database=Northwind

User: sa
Password: ***** Hide Password

Previous Next Finish Cancel

2) Enter your own SQL statement or use our Query Builder to build your SQL.

Define JDBC Datasource
Enter SQL or use the Query Builder
● SQL required

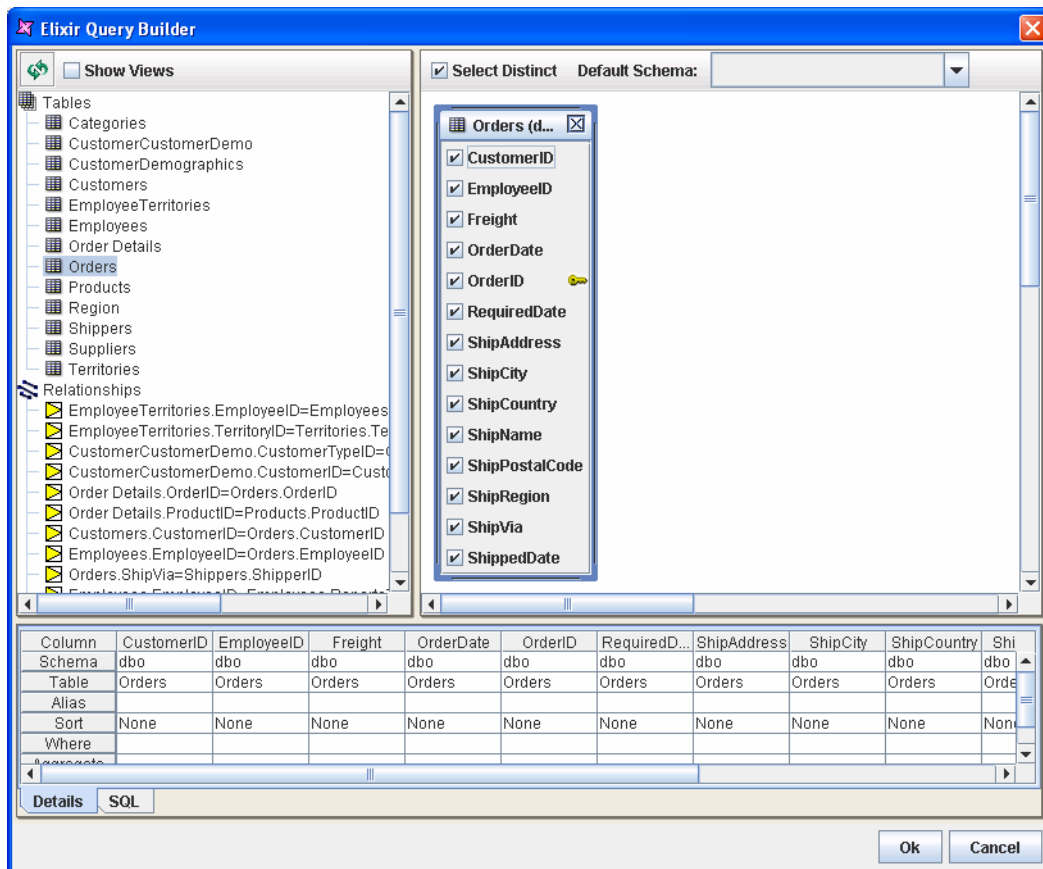
SQL Callable

Callable Statement
 Convert Nulls to Empty Strings

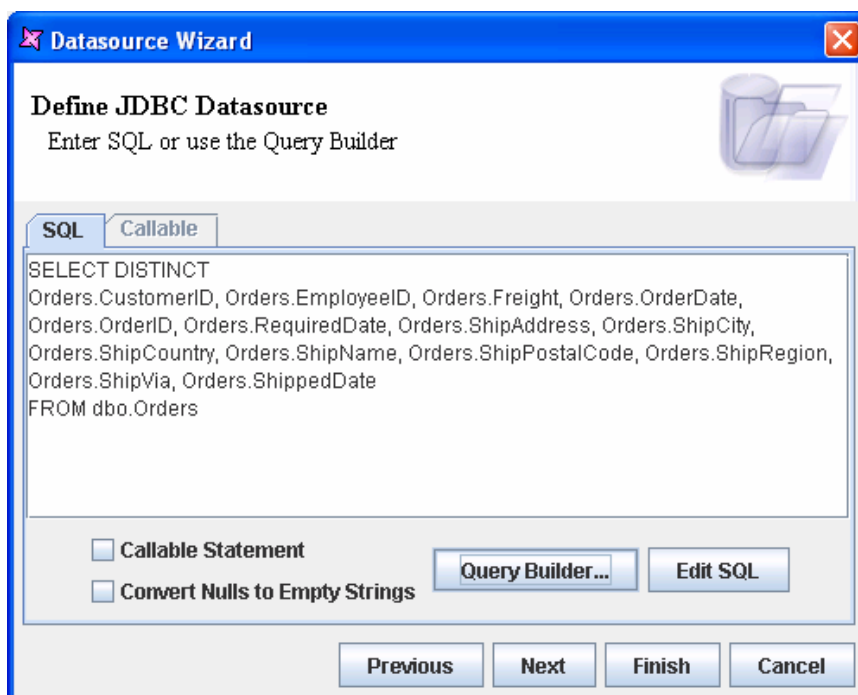
Query Builder... Edit SQL

Previous Next Finish Cancel

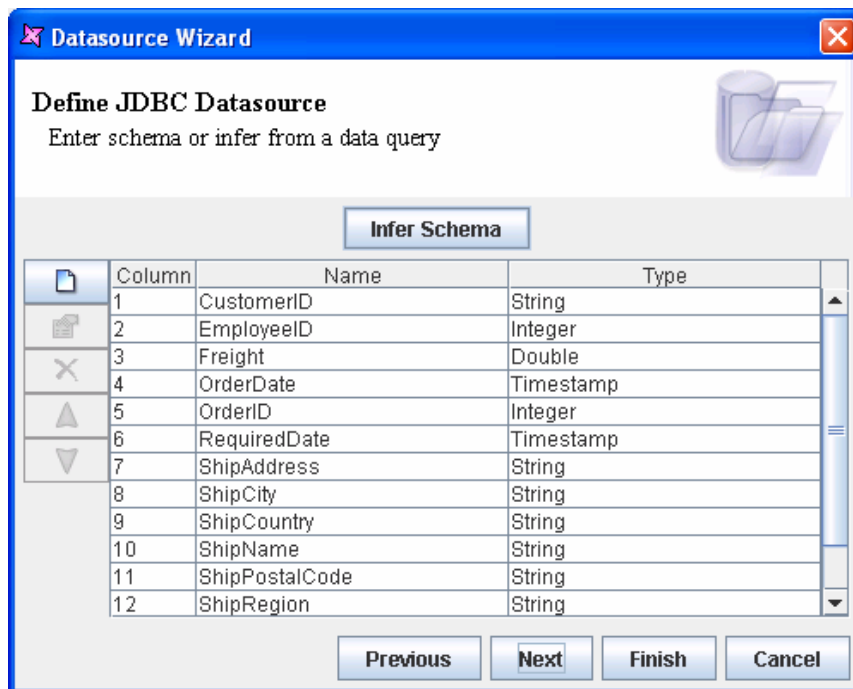
- Click on Query Builder to enter the build the SQL statement. Select the table from the left hand side panel and select the fields to include in the SQL statement.



- A SQL statement will be generated for you.



5) Click Next to go to the next screen to infer schema.



6) Click Finish and click Load Data to view the data.

Data

[Result] Showing 500 records Count All Records

CustomerID (String)	EmployeeID (Integer)	Freight (Double)	OrderID (Integer)	RequiredDate (Timestamp)	ShipAddress (String)
VINET	5	32.38	10248	1996-07-04 00:00:00	59 rue de l'Abbaye
TOMSP	6	11.61	10249	1996-07-05 00:00:00	Luisenstr. 48
HANAR	4	65.83	10250	1996-07-08 00:00:00	Rua do Paço, 67
VICTE	3	41.34	10251	1996-07-08 00:00:00	2, rue du Commerce
SUPRD	4	51.3	10252	1996-07-09 00:00:00	Boulevard Tirou, 255
HANAR	3	58.17	10253	1996-07-10 00:00:00	Rua do Paço, 67
CHOPS	5	22.98	10254	1996-07-11 00:00:00	Hauptstr. 31
RICSU	9	148.33	10255	1996-07-12 00:00:00	Starenweg 5
WELLI	3	13.97	10256	1996-07-15 00:00:00	Rua do Mercado, 12
HILAA	4	81.91	10257	1996-07-16 00:00:00	Carrera 22 con Ave. Carlos Soublette #8-
ERNSH	1	140.51	10258	1996-07-17 00:00:00	Kirchgasse 6
CENTC	4	3.25	10259	1996-07-18 00:00:00	Sierras de Granada 9993
OTTIK	4	55.09	10260	1996-07-19 00:00:00	Mehrheimerstr. 369
QUEDE	4	3.05	10261	1996-07-19 00:00:00	Rua da Panificadora, 12
RATTC	8	48.29	10262	1996-07-22 00:00:00	2817 Milton Dr.
ERNSH	9	146.06	10263	1996-07-23 00:00:00	Kirchgasse 6
FOLKO	6	3.67	10264	1996-07-24 00:00:00	Åkerгатan 24
BLONP	2	55.28	10265	1996-07-25 00:00:00	24, place Kléber
WARTH	3	25.73	10266	1996-07-26 00:00:00	Torikatu 38
FRANK	4	208.58	10267	1996-07-29 00:00:00	Berliner Platz 43
GROSR	8	66.29	10268	1996-07-30 00:00:00	5ª Ave. Los Palos Grandes
WHITC	5	4.56	10269	1996-07-31 00:00:00	1029 - 12th Ave. S.
WARTH	1	136.54	10270	1996-08-01 00:00:00	Torikatu 38
SPLIR	6	4.54	10271	1996-08-01 00:00:00	P.O. Box 555
RATTC	6	98.03	10272	1996-08-02 00:00:00	2817 Milton Dr.
QUICK	3	76.07	10273	1996-08-05 00:00:00	Taucherstraße 10
VINET	6	6.01	10274	1996-08-06 00:00:00	59 rue de l'Abbaye
MAGAA	1	26.93	10275	1996-08-07 00:00:00	Via Ludovico il Moro 22

Summary

Elixir Repertoire offers a wide array of functionalities for maximum business impact, while leveraging Java Standard & Enterprise Edition for cross-platform compatibility. Satisfied customers worldwide rely on Elixir Repertoire to improve operations efficiency as well as increase corporate profitability.

For additional information, please contact the Elixir at sales@elixirtech.com.

About Elixir Technology Pte Ltd

Elixir Technology provides a Unified Business Intelligence Platform for end-to-end information life cycle coverage from Extraction-Transformation-Loading (ETL), Data Aggregation, Cube, Reporting, Dashboard and Activation. Our flagship product, Elixir Report, has garnered over 600 customers across 50 countries in various verticals such as government, financial services, telecommunications, healthcare, retail, and technology. Going beyond enterprise reporting needs, our Integrated Business Intelligence Suite, Elixir Repertoire, is designed to further empower our customers toward becoming intelligent enterprises, where critical information is readily available to drive decisions and actions. Elixir Technology is headquartered in Singapore, with an R&D arm in UK. Through a network of partners, Elixir's products are represented in many parts of the world across major continents including Asia, America, and Europe. For more information, please visit www.elixirtech.com.



Intelligence On Demand

Elixir Technology Pte Ltd

50 Armenian Street, #04-04 Wilmer Place
Singapore 179938

Tel: +65 6532 4300 Fax: +65 6532 4255

Email: sales@elixirtech.com

Website: www.elixirtech.com