

Elixir Repertoire Plugin for NetBeans

Business Intelligence for NetBeans – Free¹ and Easy

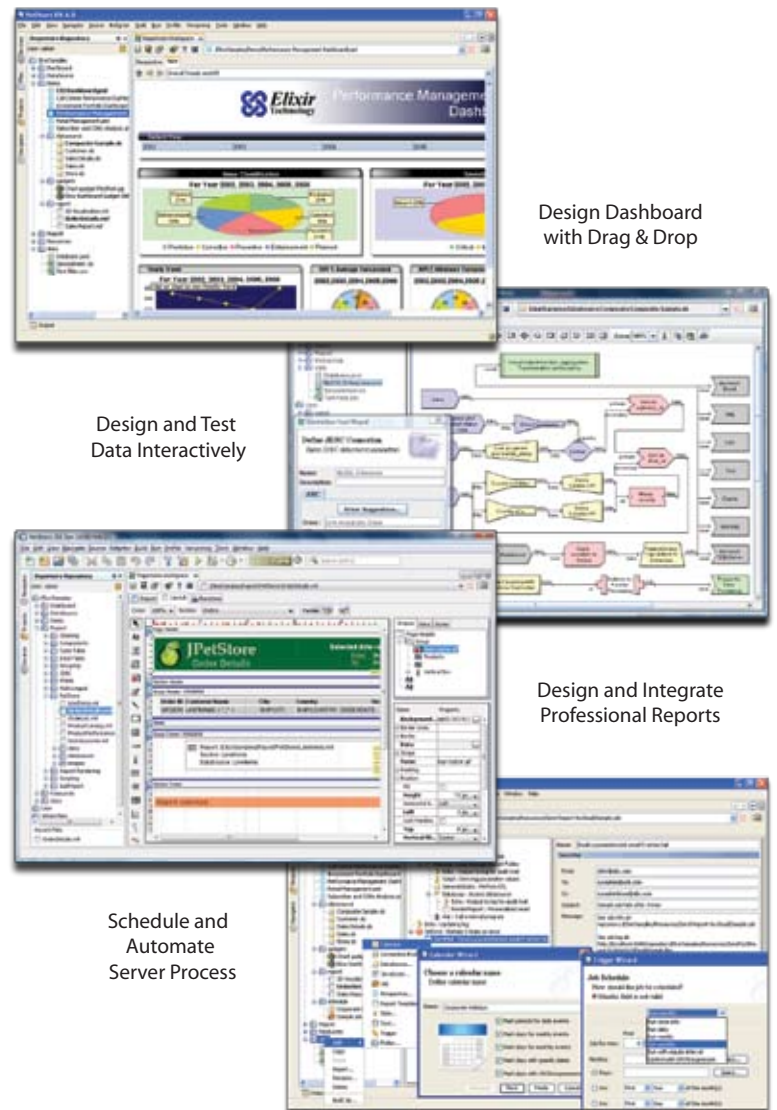
Free for Development and Easy for Design and Deployment with REST-based Architecture

The NetBeans Plugin provides a set of features for NetBeans users to incorporate Business Intelligence (BI) features such as Dashboard, Report, Data ETL and Scheduling within their applications. With REST API its underlying native interface, any application built in web enabled technologies such as Java, Ruby, AJAX, etc, can readily access the BI features through lightweight web services using a simple set of GET, POST, PUT, DELETE over HTTP or HTTPS. There is also a Java API for client connection to the Repertoire Server and another for embedding the Repertoire Runtime. The Repertoire Server, Runtime, and Remote are additional components available for licensing separately for production use.

Designed for integrated BI, it requires zero integration, just plug in and use. Simply put, it's Business Intelligence that makes sense; the free and easy way.

Start downloading today within NetBeans IDE Plugin menu, or visit our download page at: <http://www.elixirtech.com/NetBeans>

¹ The Plugin is free (as in Free Beer), for development use. To deploy the Runtime or Server to production environment, Elixir offers affordable licensing scheme ranging from one-time fee for unlimited distribution of Runtime to processor-value based licensing for unlimited user connections to the Server.



Design Dashboard with Drag & Drop

Design and Test Data Interactively

Design and Integrate Professional Reports

Schedule and Automate Server Process



System Requirements:

- Verified for NetBeans 6.0 and later
- Java SE 5.0 or later
- 256MB RAM for Plugin, 512MB for Server recommended
- 80MB disk space

