

Elixir Repertoire Designer

Tutorial Guide for Report Template Creation with Sub Report

Table of Contents

1.	Introduction.....	3
2.	Elixir Repertoire Report Designer Environment	3
3.	Orientation and Shortcut Commands.....	4
4.	Installing Elixir Repertoire Designer	5
4.1.	Installation Requirements	5
4.2.	Software Requirements.....	5
4.3.	Hardware Requirements.....	5
4.4.	Before Installation.....	6
4.5.	Ensure Java is Pre-Installed	6
4.6.	Installing Elixir Repertoire	6
4.7.	Installing Database Drivers and Additional Class Files	10
4.8.	Deploying the License Key.....	10
4.9.	Starting Elixir Repertoire Designer	11
4.10.	Running Elixir Repertoire Designer in Debug Mode	11
5.	Preparing the Exercise Environment	12
6.	Using Sub Reports	13
7.	Starting a Local Database	14
8.	Create Connection Pool	15
9.	Create a Data Source from the Connection Pool	16
10.	Create Report Template	19
10.1.	Adding a Page Title Header.....	19
10.2.	Add Grouping	20
10.3.	Populating the Report	20
11.	Create Composite Data Source	22
11.1.	Add Parameter	22
12.	Create Sub Report Template.....	23
13.	Add Sub Report Template	26

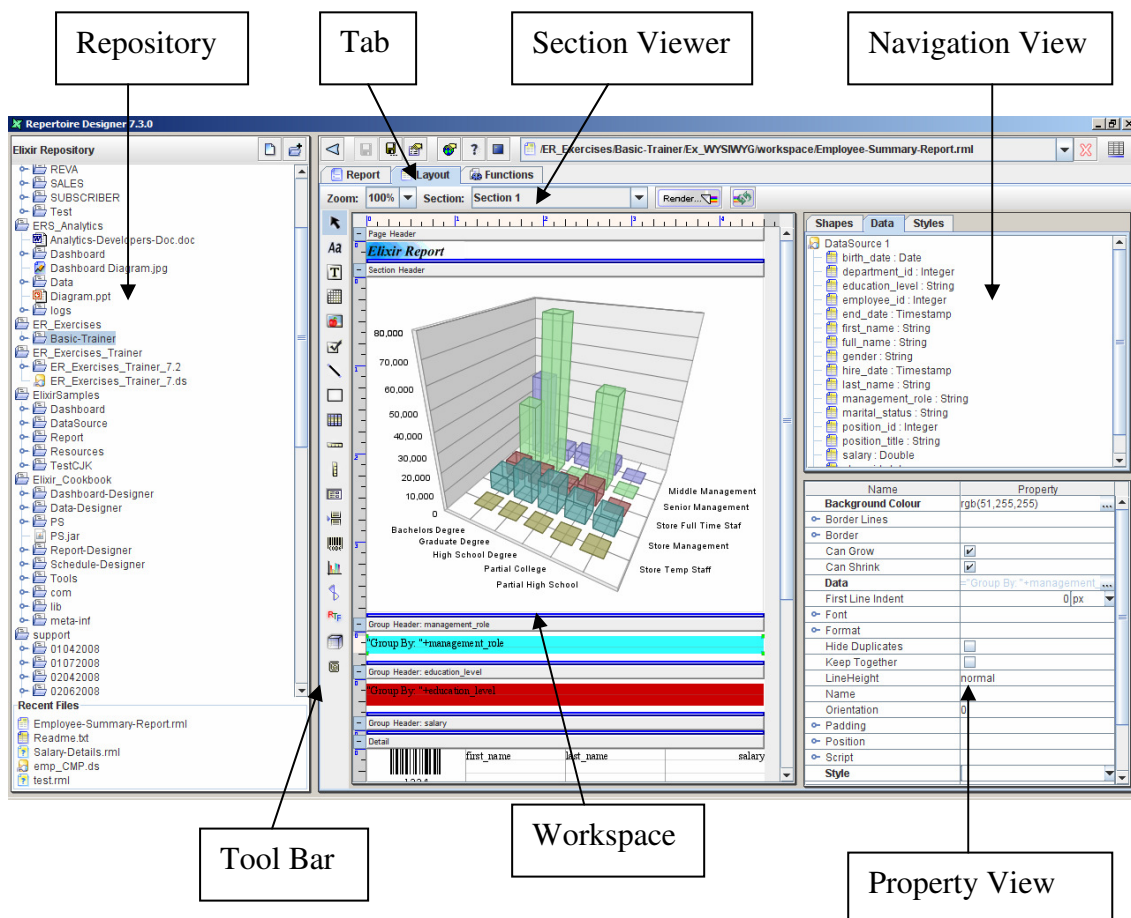
1. Introduction

The purpose of this document serves as a basic self-tutorial guide for users to familiarise themselves with the Elixir Repertoire Report Designer. These step-by-step exercises will assist users in understanding the following processes:

1. Report template creation
2. Mapping a data source to the report template
3. Adding sections to a report template
4. Creating a composite data source
5. Creating a sub report template
6. Implementing a parameter and passing it to the template level
7. Adding the composite data source to the sub report
8. Including the sub report template within the main report

2. Elixir Repertoire Report Designer Environment

Below is a brief overview of the work area that users will be working with throughout these exercises:



3. Orientation and Shortcut Commands

General Shortcuts:

Actions	Shortcut Commands
Copy	Ctl + "C"
Paste	Ctl + "V"
Undo	Ctl + "Z"

For Repository:

Actions	Shortcut Commands
Copy a File	Highlight, Ctrl+Move mouse
Move a File	Highlight, Move mouse
Copy Repository URL	Right Click, select "Copy URL"
Invoke Menus on Folder	Right Click on Folder
Add element to Report Design Area	Click on Report Element, Click on empty Canvas Area
Add/Remove ruler	Click on Ruler Area (Horizontal/Vertical)

Report Layout:

How to select more than 1 element

- Click and Drag Select elements or
- Select 1 report element and Ctl-Select another

4. Installing Elixir Repertoire Designer

4.1. Installation Requirements

Elixir Repertoire supports any Java SE version 5.0 Runtime Environment (JRE) update 12 (or later) compliant platforms such as the following:

- Windows
- Solaris (including 10)
- AIX
- Linux
- Macintosh OS X (10.2 or higher)

4.2. Software Requirements

Elixir Repertoire requires the following software to run. Please make sure you install the software prior to installing Elixir Repertoire:

- The software requires a Java SE version 5.0 Runtime Environment (JRE) update 12 or later. If you do not have Java pre-installed, please download and install it from: <http://java.sun.com/javase/downloads/index.jsp> or from your preferred vendor.
- Adobe Acrobat PDF viewer plug-in on the client web-browser

4.3. Hardware Requirements

Elixir software is able to run on a usual entry level system available in the market. As long as the operating system and the Java runtime are able to operate smoothly, Elixir software itself only requires an incremental amount of RAM.

You may refer to the “System requirements for the Java Runtime Environment 5.0” at <http://www.java.com/en/download/help/5000011000.xml>.

For Elixir Repertoire Designer, a recommended minimum RAM configuration would be 256MB, and for more advanced usage, 512MB is recommended.

In addition, a total of 150MB disk space is recommended for the following:

- 50 MB for Elixir Repertoire Designer application files, documentations and samples
- Up to 80 MB for the Java runtime (depending on the version)
- 20 MB reserved space for other 3rd party add-on software like database drivers.

4.4. Before Installation

Ensure you have Administrator privileges. If you are installing Elixir Repertoire on a computer running any of the supported operating systems (see Installation Requirements above), you must have Administrator privileges. The installation process creates registry entries and may update some system files that require Administrator rights.

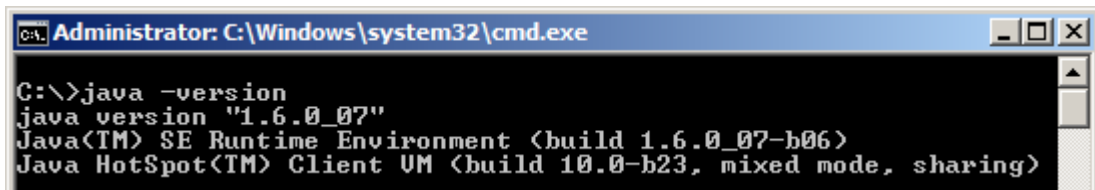
4.5. Ensure Java is Pre-Installed

The software requires a Java SE version 5.0 Runtime Environment (JRE) update 12 or later. If you do not have Java pre-installed, please download and install it from <http://java.sun.com/javase/downloads/index.jsp> or from your preferred vendor.

To find out if your system has the correct version of Java installed, go to the command prompt and key in the following:

```
java -version
```

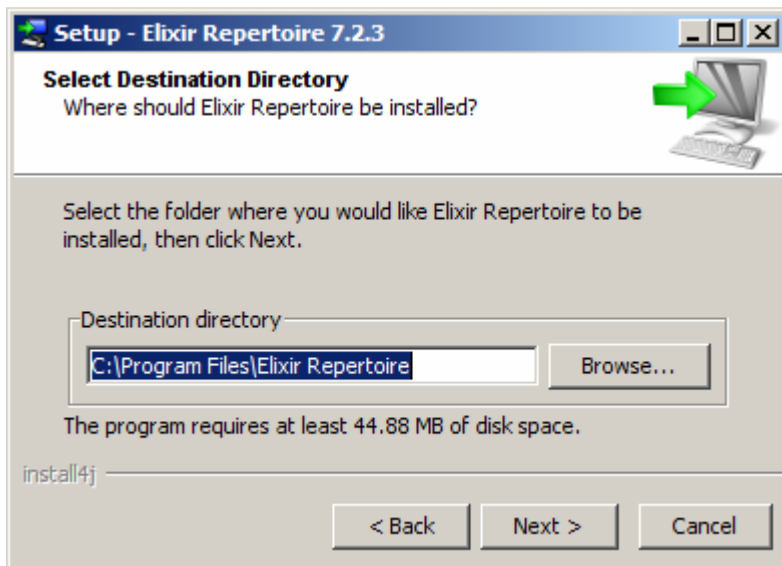
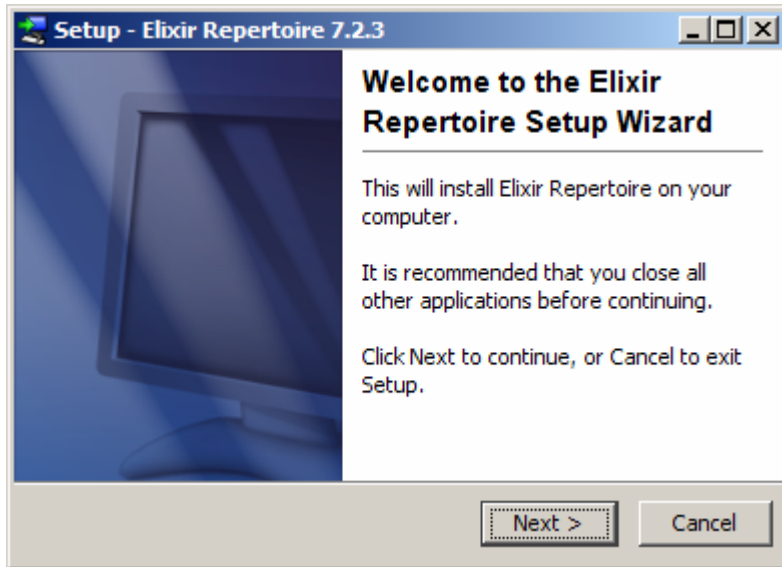
The system will return the following as an example:



```
Administrator: C:\Windows\system32\cmd.exe
C:\>java -version
java version "1.6.0_07"
Java(TM) SE Runtime Environment (build 1.6.0_07-b06)
Java HotSpot(TM) Client VM (build 10.0-b23, mixed mode, sharing)
```

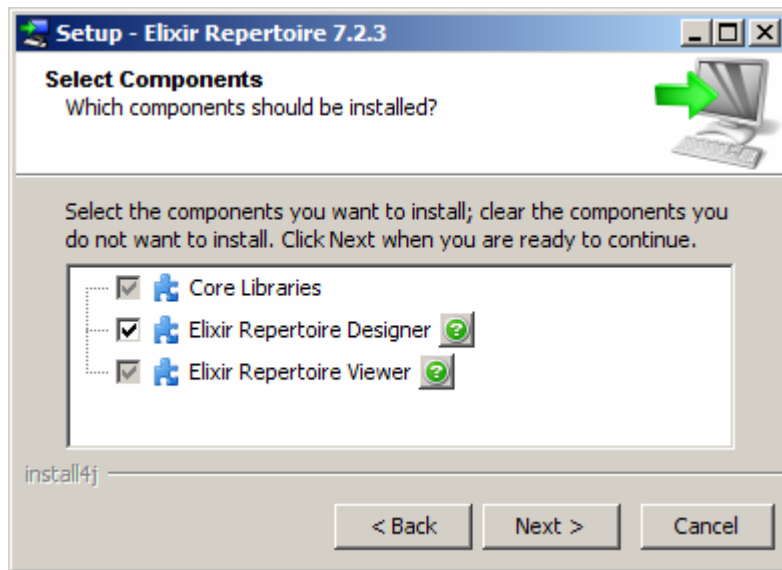
4.6. Installing Elixir Repertoire

- For any Java enabled platforms, please unzip Repertoire7.x.x.zip to a specific installation path. Deploy the database drivers and license keys accordingly (see “Installing Database Drivers and Additional Class Files” and “Deploying the License Key”). Create a start up shell script (.sh file) as shown in “Running Elixir Repertoire Designer in Debug Mode”.
- For Windows Platform, please click and run Elixir Repertoire Installer 7.x.x.exe to begin guided installation.

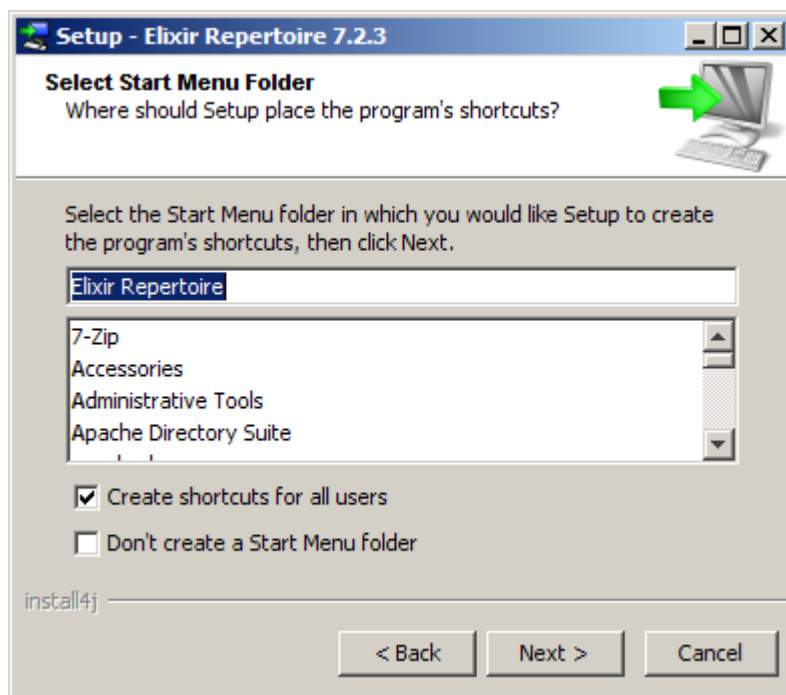


An installation path dialog box appears for you to choose your desired installation location. Default installation directory is C:\Program Files\Elixir Repertoire

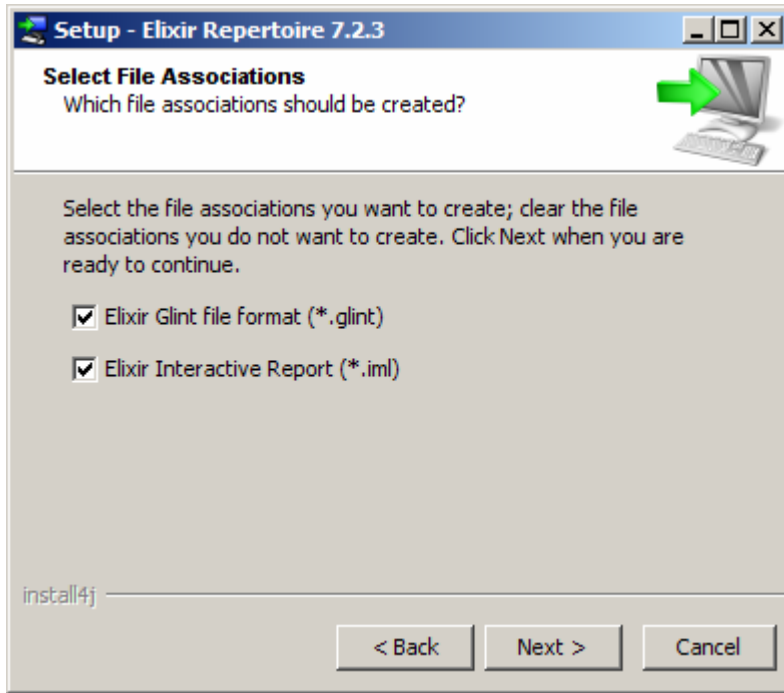
Do take note that if you are installing an upgrade of Elixir Repertoire, the installation wizard will prompt you with a warning, stating that the new version will be installed at the default location, thus overwriting your old version of Elixir Repertoire. If you wish to keep the previous version, do change the installation path to prevent overwriting the old version.



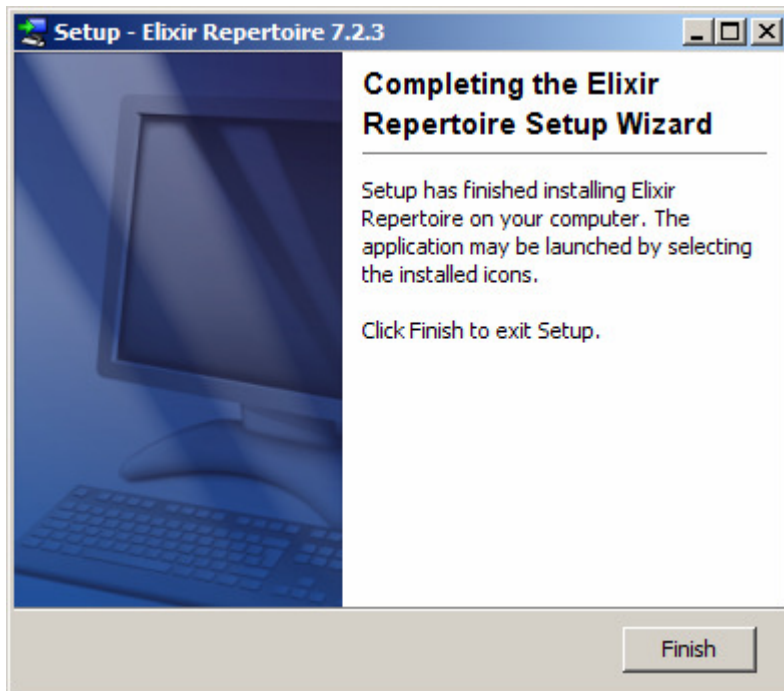
You will then be prompted to select the various components for installation. Leave the selection as is and click “Next” to continue.



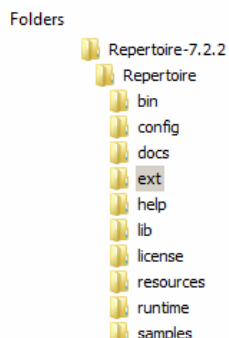
Change the name of the start menu folder containing the Elixir Repertoire shortcuts and leave it as is and click “Next” to continue with the installation.



Click “Next” to proceed with the installation. Depending on the speed, the installation of Elixir Repertoire will be completed in a few minutes.



4.7. Installing Database Drivers and Additional Class Files



The installation of database drivers and additional Java class files can be installed in the /ext directory of the Repertoire installation.

Database drivers must support JDBC connectivity and be packaged as jar files. An example of a typical /ext directory may look like the following example:

Name	Date modified	Type	Size	Tags
Customers	26/1/2006 5:52 AM	Executable Jar File	3 KB	
Horizontal_Tiling	9/10/2007 10:28...	Executable Jar File	6 KB	
hsqldb	20/8/2005 7:08 PM	Executable Jar File	616 KB	
JSQConnect_ver_4.0	4/9/2007 11:47 AM	Executable Jar File	485 KB	
labels	6/10/2006 5:02 PM	Executable Jar File	3 KB	
LicenseGenerator	5/10/2007 9:38 AM	Executable Jar File	5 KB	
mysql	4/9/2007 1:37 PM	Executable Jar File	436 KB	
mysql-3.2.0	4/9/2007 1:37 PM	Executable Jar File	395 KB	
ojdbc6	4/10/2007 11:13...	Executable Jar File	1,932 KB	
postgresql-8.3-603.jdbc3	18/6/2008 6:21 PM	Executable Jar File	437 KB	
RB	4/1/2008 3:08 PM	Executable Jar File	45 KB	
ReportUtils	16/5/2008 5:08 PM	Executable Jar File	17 KB	
SecurityManagementReport.bin	3/4/2006 3:48 PM	BIN File	4 KB	
SLCReconciliationReport.bin	3/4/2006 6:22 PM	BIN File	2 KB	
sqljdbc	4/9/2007 1:36 PM	Executable Jar File	248 KB	

4.8. Deploying the License Key

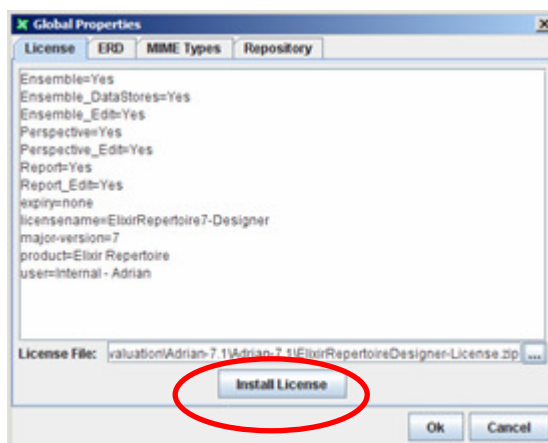
Copy the license key, e.g. ElixirRepertoire7-Designer-license.txt or ElixirRepertoire7-Designer-license.zip to \$USER_HOME directory, eg. C:\Documents and Settings\User before running Elixir Repertoire Designer.

If the application starts up with a message that the license key cannot be found, access the “Global Properties” to manually install the license key.



At the “Global Properties” dialog box, access the first tab, “License” and click on the “...” button to select the location of your license key. Select the license key and click “Open”. The “Global Properties” dialog box will now display the licensing details.

Click on “Install License” to deploy the license key followed by “Ok” when done.



4.9. Starting Elixir Repertoire Designer

Once the key is deployed, run the software from the start menu by accessing the Elixir Repertoire folder followed by the Elixir Repertoire icon.



Alternatively, the Elixir Repertoire executable can also be accessed from the /bin directory of the Repertoire installation path.

Name	Date modified	Type	Size
Elixir Repertoire	25/4/2008 1:10 PM	Application	158 KB
Elixir Repertoire.exe...	25/4/2008 1:10 PM	VMOPTIONS File	1 KB
Elixir Report Interact...	25/4/2008 1:10 PM	Application	158 KB
Elixir Report Interact...	25/4/2008 1:10 PM	VMOPTIONS File	1 KB
ERI-Launcher	25/4/2008 1:10 PM	Executable Jar File	14 KB
migrate	25/4/2008 1:10 PM	Windows Batch File	1 KB
migrate.sh	25/4/2008 1:10 PM	SH File	1 KB
Repertoire-Launcher	25/4/2008 1:10 PM	Executable Jar File	66 KB

4.10. Running Elixir Repertoire Designer in Debug Mode

```
RunRep7.2.2 - Shortcut
file:/C:/Program_Files/Repertoire-7.2.2/Repertoire/lib/jcommon.jar
file:/C:/Program_Files/Repertoire-7.2.2/Repertoire/lib/jfreechart.jar
file:/C:/Program_Files/Repertoire-7.2.2/Repertoire/lib/jhall.jar
file:/C:/Program_Files/Repertoire-7.2.2/Repertoire/lib/js.jar
file:/C:/Program_Files/Repertoire-7.2.2/Repertoire/lib/jxl.jar
file:/C:/Program_Files/Repertoire-7.2.2/Repertoire/lib/log4j.jar
file:/C:/Program_Files/Repertoire-7.2.2/Repertoire/lib/Repertoire.jar
file:/C:/Program_Files/Repertoire-7.2.2/Repertoire/lib/tagsoup-1.2.jar
0 AWT-EventQueue-0 INFO com.elixirtech.util.Logging - Log4J logging enabled
Unable to configure substance: java.lang.ClassNotFoundException: org.jvnet.substance.SubstanceLookAndFeel
2848 Thread-3 INFO com.elixirtech.arch.repository.StandaloneRepositoryExplorer - loadFileSystems: Repertoire
3104 AWT-EventQueue-0 INFO com.elixirtech.arch.Elixir - Loading extensions
3105 AWT-EventQueue-0 INFO com.elixirtech.arch.Elixir - Extension directory: C:\Program_Files\Repertoire-7.2.2\Repertoire\ext
3109 AWT-EventQueue-0 INFO com.elixirtech.arch.Elixir - Loading extension information from C:\Program_Files\Repertoire-7.2.2\Repertoire\ext\postgresql-8.3-603.jdbc3.jar
3116 AWT-EventQueue-0 INFO com.elixirtech.arch.Elixir - No Elixir-Extension defined in C:\Program_Files\Repertoire-7.2.2\Repertoire\ext\postgresql-8.3-603.jdbc3.jar
3123 AWT-EventQueue-0 INFO com.elixirtech.arch.Elixir - All extensions loaded
2737543 AWT-EventQueue-0 INFO com.elixirtech.arch.repository.BasicRepositoryAct
```

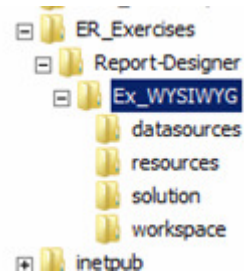
Running Elixir Repertoire Designer in debug mode allows users to monitor and track any errors arising from the design of their report templates and data sources. To run in debug mode, open a text editor and input the following as a single line, modifying the text in bold according to your own environment:

```
"C:\Program_Files\java\jre1.6.0_02\bin\java.exe" -mx512m -classpath
.\Repertoire-Launcher.jar com.elixirtech.repertoire.Launcher
```

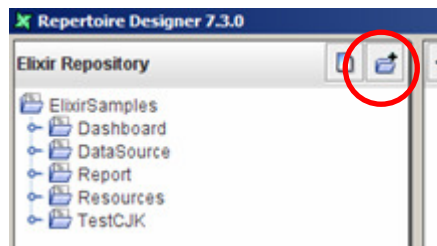
Save the text as a batch file (.bat) in the /bin directory of the Repertoire Designer installation and execute this .bat to run in debug mode.

5. Preparing the Exercise Environment

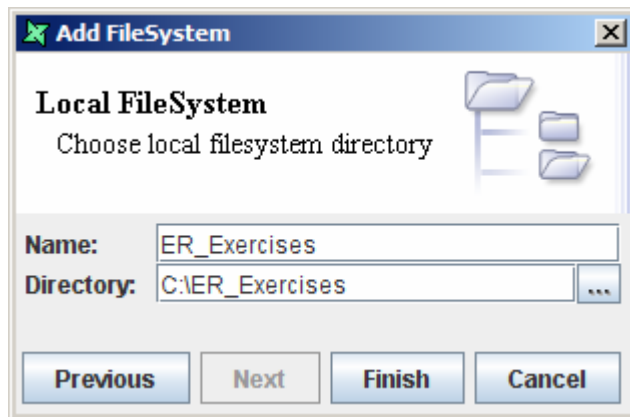
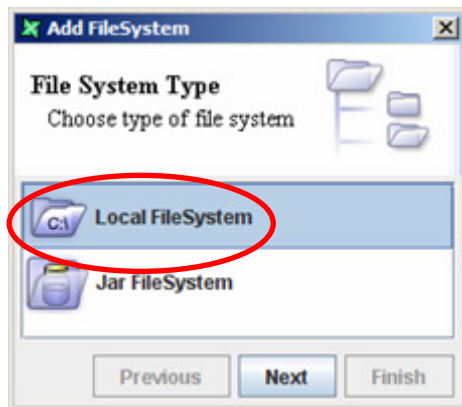
This exercise is part of a series of self-help practices and tutorials to get users familiarised with the Repertoire Designer. Each exercise is categorised based on specific features. To get started, create an “ER_Exercises” folder and a “Report-Designer” subfolder if you have not done so from pervious exercises. Unzip the “Ex_WYSIWYG” folder into “ER_Exercises/Report-Designer” so that the directory structure would be “ER_Exercises/Report-Designer/ Ex_WYSIWYG” as shown in the example.



In the Repertoire Designer environment, the “ER_Exercise” folder needs to be added to the repository to access the files. To begin, click on the “Add Filesystem” button.

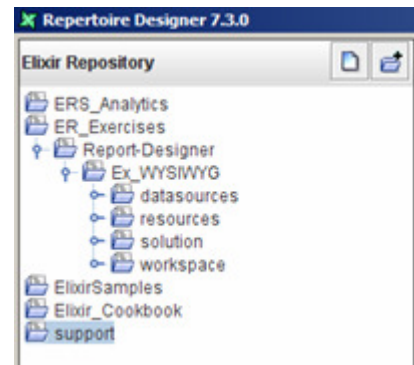


Highlight the option “Local Filesystem” and click on “Next”. Go to “Directory” and click on the “...” button. Select the “ER_Exercises” directory and click “Open”. In the “Name” field, input “ER_Exercises”. The pop dialog should look like the example below. Click “Finish” to continue.



The “ER_Exercises” will appear in the repository as shown in the example.

If the “ER_Exercises” directory and “Report-Designer” sub directory were created from a previous exercise, unzip the “Ex_WYSIWYG” exercise directory accordingly. Ensure that the folder structure appears accordingly in the example shown.



6. Using Sub Reports

Sub reports are used to present a different aspect of the one-to-many relationships in a report. For example, in this exercise the main report will render the customer’s details while the sub report will render the order details made by the customer as shown below.

Data sources used for both components of the report are different but data retrieved by the ORERID column in the sub report data source depends on the ID number retrieved from the main report.

Elixir Report

ID 1001
ADDRESS1 12, Garden Road
ADDRESS2
COMPANY Fairway Fruit Mart
POSTALCODE 89393
CITY Singapore
COUNTRY Singapore

Main Report

ORDERID	PRODUCTID	PRODUCTNAME	WEIGHTIN KG	COSTPERKG
1001	19	Apple	20.0	2.5
1001	20	Apricot	11.0	5.0
1001	22	Blackberries	1000.0	3.0
1001	24	Carambola	200.0	2.5
1001	25	Grape	123.0	2.0
1001	26	Guava	800.0	3.4
1001	28	Longgan	100.0	1.0
1001	37	Strawberry	200.0	4.2

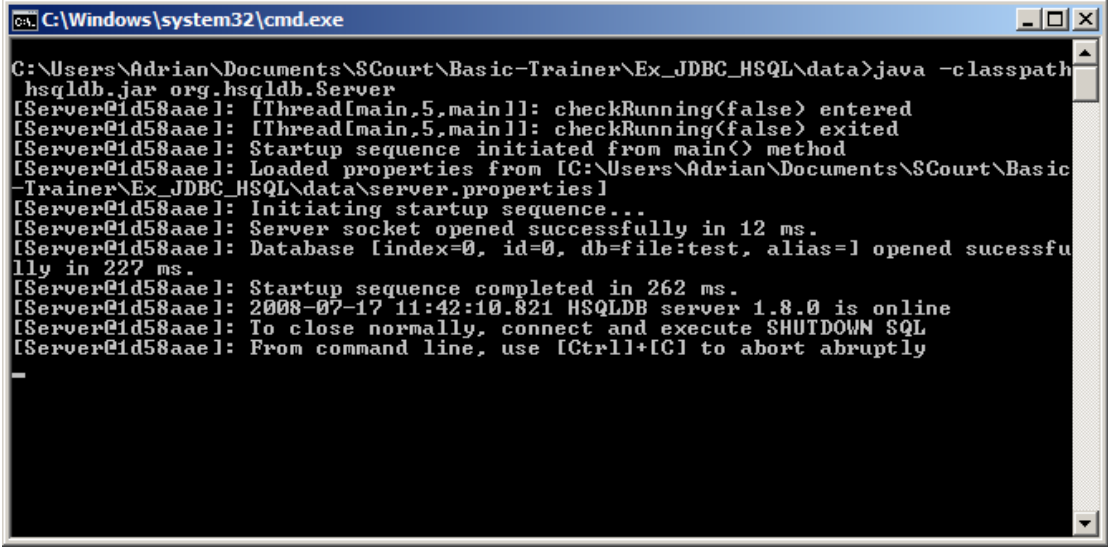
ORDERID	PRODUCTID	PRODUCTNAME	WEIGHTIN KG	COSTPERKG
1001	19	Apple	20.0	2.5
1001	20	Apricot	11.0	5.0
1001	22	Blackberries	1000.0	3.0
1001	24	Carambola	200.0	2.5
1001	25	Grape	123.0	2.0
1001	26	Guava	800.0	3.4
1001	28	Longgan	100.0	1.0
1001	37	Strawberry	200.0	4.2

Sub Report

7. Starting a Local Database

For this exercise a demo database server will be used to simulate creating a JDBC connection using a database pool.

Go to “datasources” and right click on the “data” folder. Select “View”. A pop up window showing the folder’s contents will appear. Double click on runServer.bat to start the demo server.



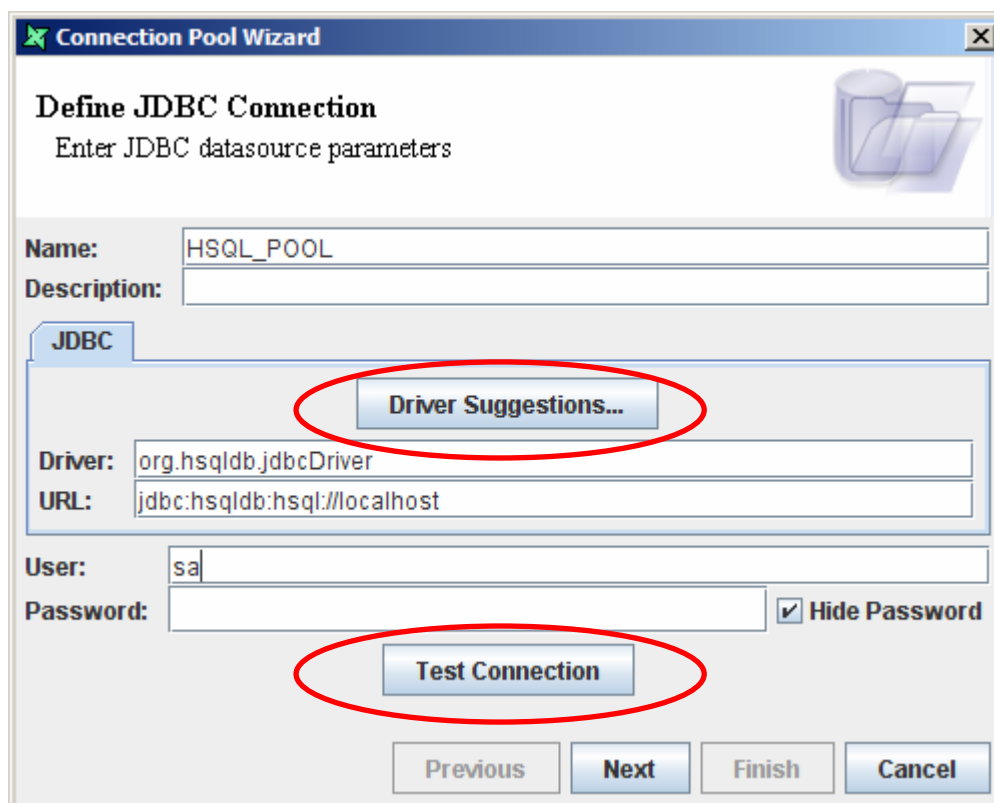
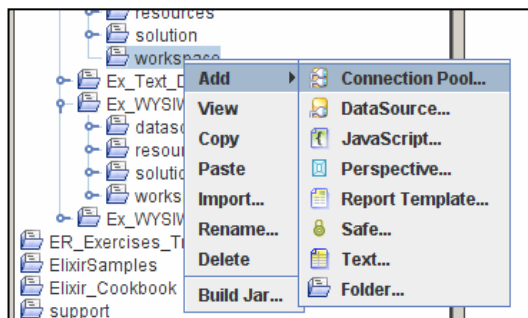
```
C:\Windows\system32\cmd.exe
C:\Users\Adrian\Documents\SCourt\Basic-Trainer\Ex_JDBC_HSQL\data>java -classpath
hsqldb.jar org.hsqldb.Server
[Server@1d58aae]: [Thread[main,5,main]]: checkRunning(false) entered
[Server@1d58aae]: [Thread[main,5,main]]: checkRunning(false) exited
[Server@1d58aae]: Startup sequence initiated from main() method
[Server@1d58aae]: Loaded properties from [C:\Users\Adrian\Documents\SCourt\Basic
-Trainer\Ex_JDBC_HSQL\data\server.properties]
[Server@1d58aae]: Initiating startup sequence...
[Server@1d58aae]: Server socket opened successfully in 12 ms.
[Server@1d58aae]: Database [index=0, id=0, db=file:test, alias=] opened successfu
lly in 227 ms.
[Server@1d58aae]: Startup sequence completed in 262 ms.
[Server@1d58aae]: 2008-07-17 11:42:10.821 HSQLDB server 1.8.0 is online
[Server@1d58aae]: To close normally, connect and execute SHUTDOWN SQL
[Server@1d58aae]: From command line, use [Ctrl]+[C] to abort abruptly
```

Another window with a black screen will appear. Minimize this window (do not close it) to keep the demo database running in the background.

8. Create Connection Pool

The connection pool is a central file that holds configuration and settings needed to connect to a database. Loading a connection pool from a data source is recommended in projects where multiple data sources use the same data base configurations. For example, when migrating the report templates from the development environment to the production environment, one simply needs to change the connection pool from the development to the production database to enable the report templates to be rendered in the production environment.

1. Right click on the “workspace” folder
2. Select “Add” followed by “Connection Pool”
3. Name the connection pool “HSQL_POOL” and click on the “Driver Suggestions” button
4. Select “HypersonicSQL Server” from the list and click “Ok”



Connection Pool Wizard

Define JDBC Connection
Enter JDBC datasource parameters

Name: HSQL_POOL
Description:

JDBC

Driver Suggestions...

Driver: org.hsqldb.jdbcDriver
URL: jdbc:hsqldb:hsq://localhost

User: sa
Password: Hide Password

Test Connection

Previous Next Finish Cancel

5. Edit the URL address accordingly:

jdbc:hsqldb:hsq://localhost

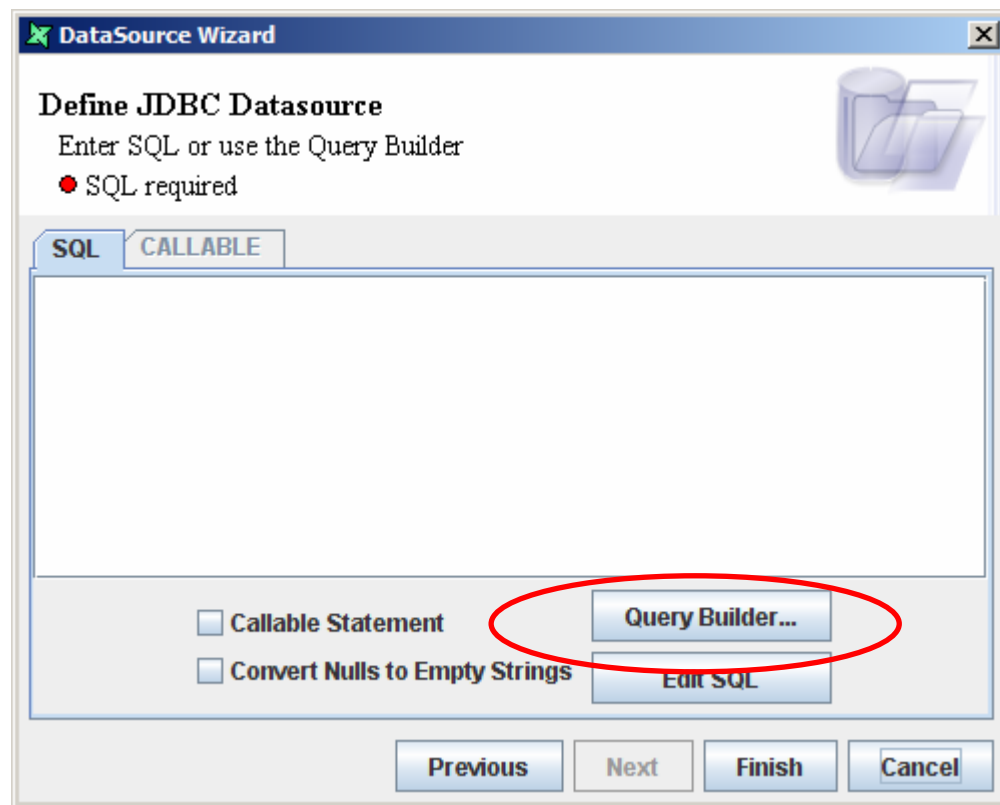
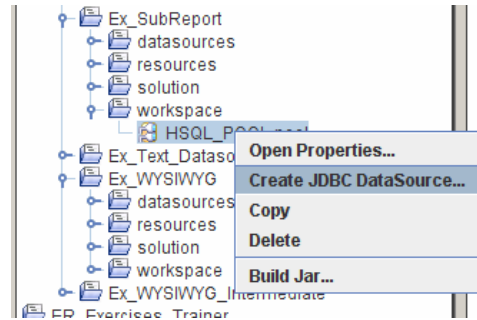
6. Enter “sa” as the “User”. Leave the password field blank and click on “Test Connection”

7. If a “Test Succeeded” message appears then the connection pool has been properly set up
8. Click “Next” and “Finish” when done

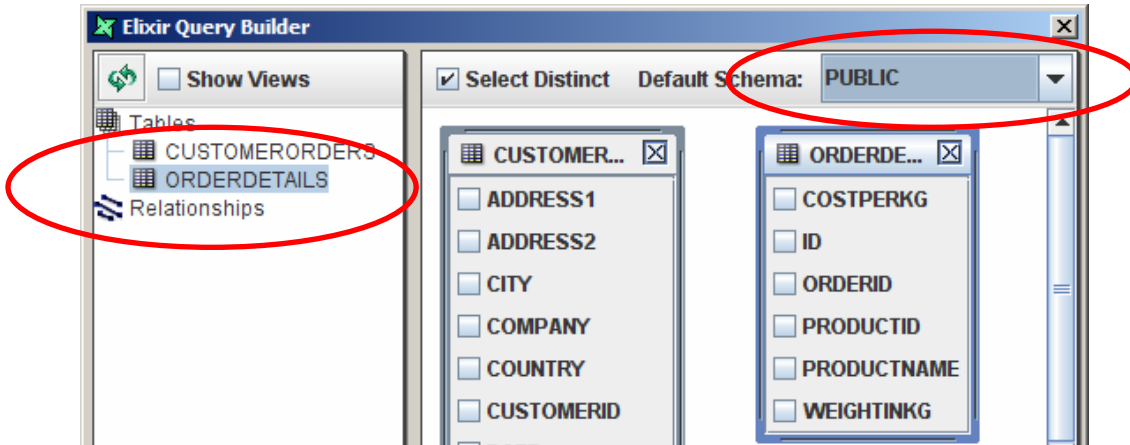
9. Create a Data Source from the Connection Pool

From versions 7.2 onwards, a JDBC data source can be created from the connection pool itself.

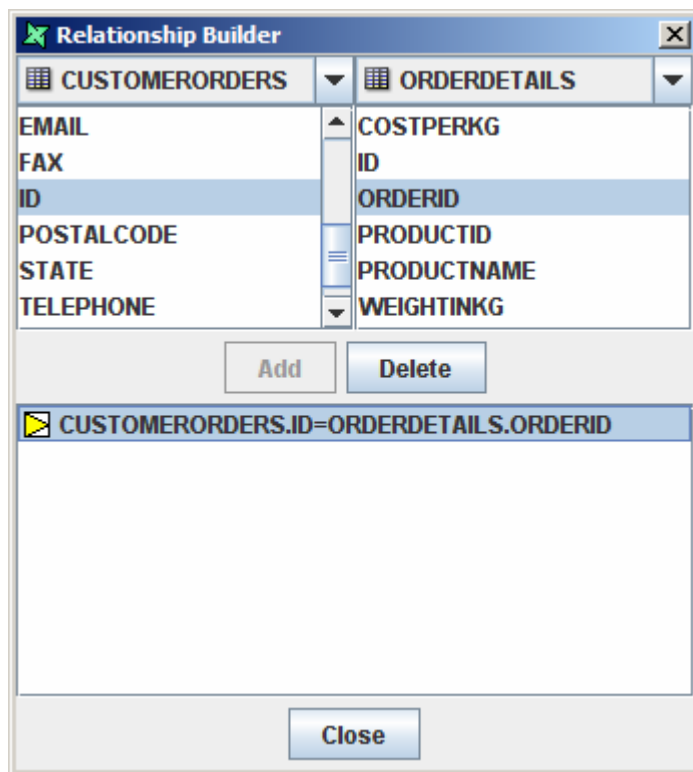
1. Right click on the connection pool and select “Create JDBC DataSource”
2. Name the data source “OrderDetails” and click “Next”
3. Select “Query Builder”



4. In the query builder double click on both “CUSTOMEROERDERS” and “ORDERDETAILS” to bring up the two tables

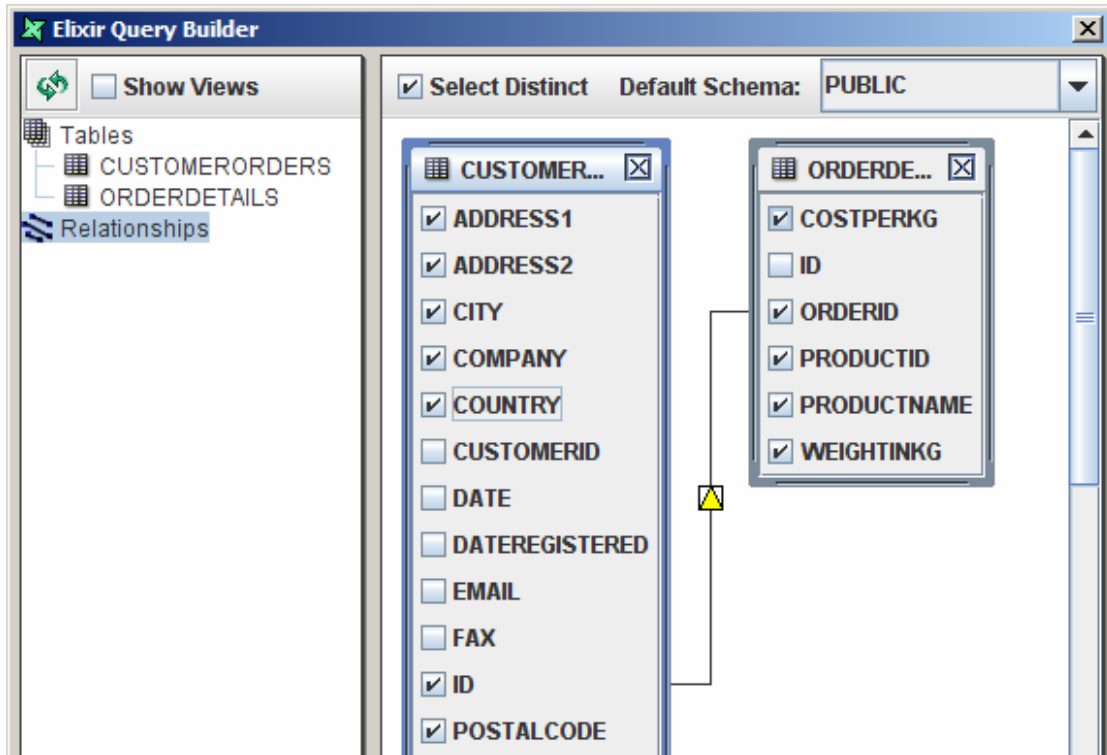


5. Go to “Default Schema” and select “PUBLIC” from the drop down menu
6. Right click on “Relationships” on the left panel and select “Add Relationship”
7. In the relationship builder, select “ID” from “CUSTOMERORDERS” and “OERDERID” from “ORDERDETAILS”. Click “Add” and “Close” when done
8. A connecting line similar to the example on the following page should be established between the two tables

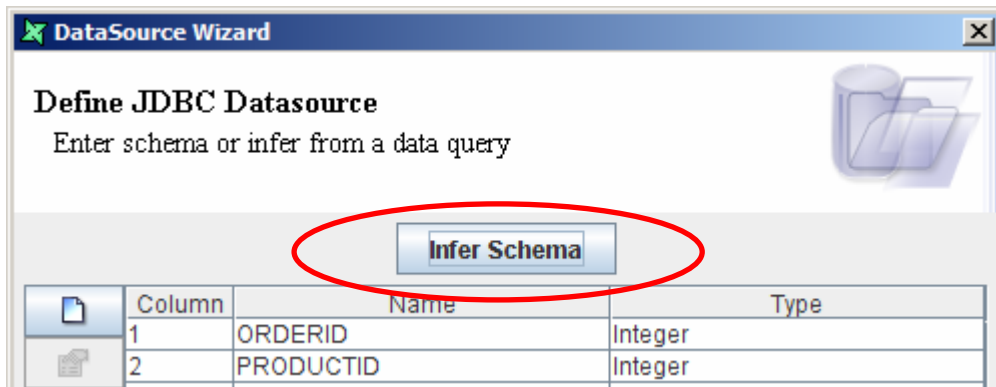


9. Check the following columns for each table:

CUSTOMERODERS	ORDERDETAILS
ADDRESS1	COSTPERKG
ADDRESS1	ORDERID
CITY	PRODUCTID
COMPANY	PRODUCTNAME
COUNTRY	WEIGHTINGK
ID	
POSTAL CODE	



10. Click “Ok” when done
11. Click “Next” up to “Define JDBC Datasource” section
12. Click on “Infer Schema”. The columns and data type should be displayed
13. Click “Finish” when done



14. The data source workspace will now appear. Click on the “Load Data” button to test the data source. If set up correctly, the data should be display as shown below:

Repertoire Designer 7.3.0

/ER_Exercises/Basic-Trainer/Ex_SubReport/workspace/OrderDetails.ds

Data

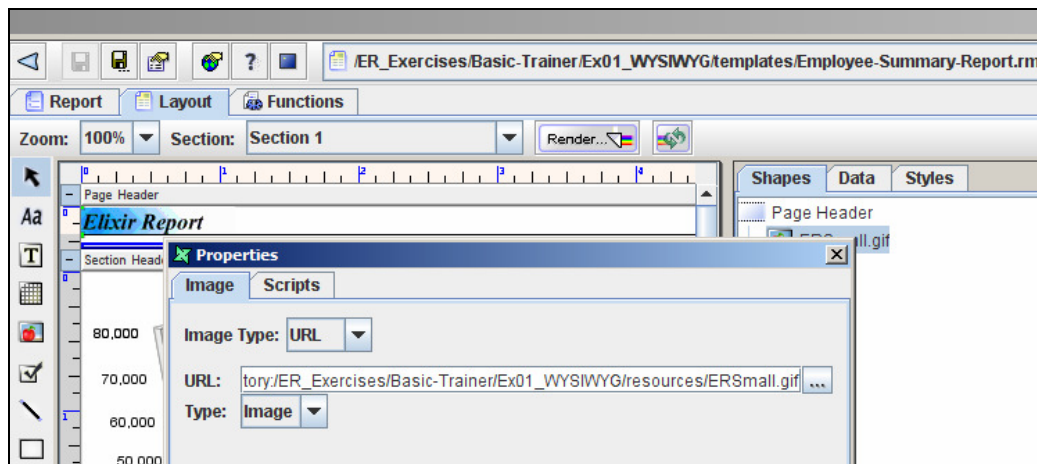
[Result] Showing 117 records

ORDERID (Integer)	PRODUCTID (Integer)	ID (Integer)	PRODUCTNAME (String)	WEIGHTINGK (Double)	COSTPERKG (Double)	ADDRESS1 (String)	ADDRESS2 (String)
1001	19	1001	Apple	20.0	2.5	12, Garden Road	
1001	20	1001	Apricot	11.0	5.0	12, Garden Road	
1001	22	1001	Blackberries	1000.0	3.0	12, Garden Road	
1001	24	1001	Carambola	200.0	2.5	12, Garden Road	
1001	25	1001	Grape	123.0	2.0	12, Garden Road	
1001	26	1001	Guava	800.0	3.4	12, Garden Road	
1001	28	1001	Longgan	100.0	1.0	12, Garden Road	
1001	37	1001	Strawberry	200.0	4.2	12, Garden Road	
1002	19	1002	Apple	510.0	2.5	50 Cross Street	#01-20, Fresh Food Centre
1002	20	1002	Apricot	11.0	5.0	50 Cross Street	#01-20, Fresh Food Centre
1002	22	1002	Blackberries	1000.0	3.0	50 Cross Street	#01-20, Fresh Food Centre
1002	24	1002	Carambola	200.0	2.5	50 Cross Street	#01-20, Fresh Food Centre

10. Create Report Template

Create a new blank report template. Right click on the “workspace” folder, select “Add” followed by “report template”. Follow the wizard instructions. In the “Report” tab, look for the “DataSources” node in the template structure and add the “OrderDetails” data source.

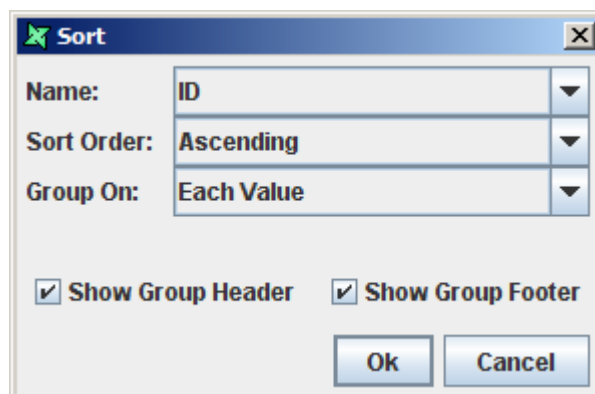
10.1. Adding a Page Title Header



1. Add an image element to the “Page Header” of the template workspace.
2. Ensure that the image URL reflects the correct image file under the image properties.

10.2. Add Grouping

1. Go to the “Report” tab, look for the “Sections” node and right click on the current section and select “Edit Section”.
2. Click on the “Group and Sort” tab and click on the “Add” icon.
3. From the drop down lists, select “ID” for “Name”, “Ascending” for “Sort Order” and “Each Value” for “Group On”.

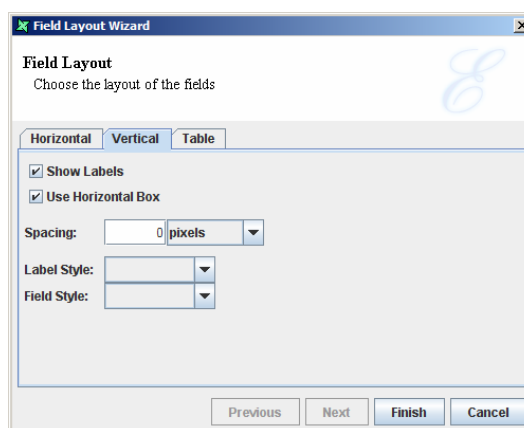


10.3. Populating the Report

1. Hold “Alt” and select the following in this particular order from the “Data” tab:

- ID
- COMPANY
- ADDRESS1
- ADDRESS2
- POSTALCODE
- CITY
- COUNTRY

2. Drag the fields over to “Group Header: ID”.
3. Check the “Show Labels” and “Use Horizontal Box” options.



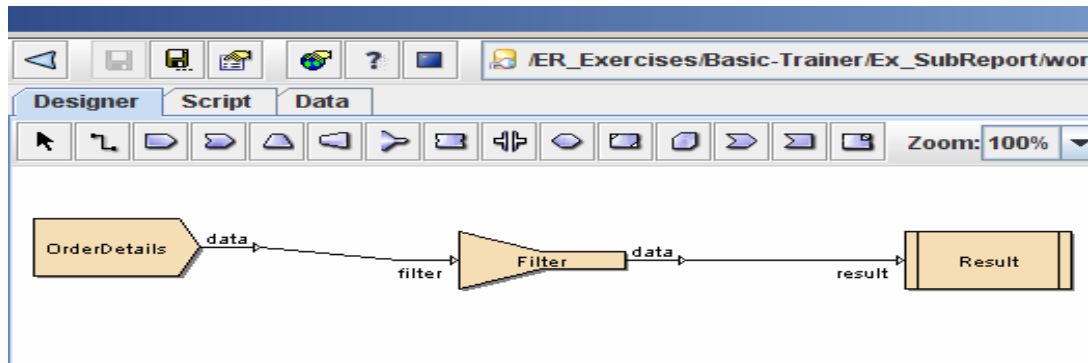
4. Hold “Alt” and click on the “ID” data field on the right. Go to the “Properties View” and expand the “Position” node. Change the “Text Align” to “Left” using the drop down menu.

The screenshot displays a report designer interface. On the left, a report titled "Elixir Report" is shown with a table structure. The table has a "Group Header: ID" section containing fields: ID, ADDRESS1, ADDRESS2, COMPANY, POSTALCODE, CITY, and COUNTRY. A red circle highlights the "ID" field in the table. On the right, a "Properties" window is open, showing a tree view of the report's structure. The "Text Align" property is highlighted with a red circle, and its value is set to "Left". Below the tree view, a table lists various properties and their values:

Name	Property
Name	
Orientation	0
Padding	
Position	
Fill	<input type="checkbox"/>
Height	20 px
Left	211 px
Lock Headers	<input type="checkbox"/>
Text Align	Left
Top	0 px
Vertical Align	Top
Width	126 px
Print	

5. Click "Finish" when done.

11. Create Composite Data Source

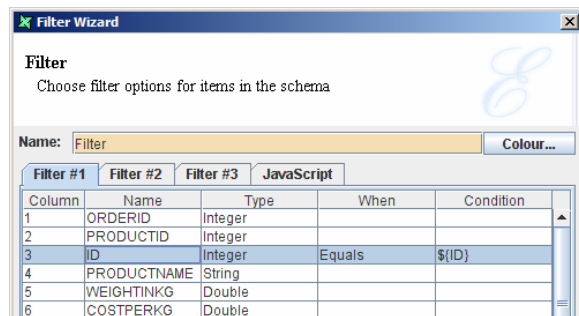


1. Right click on the working folder (preferably where the OrderDetails.ds is located) and select “Add” followed by “Data Source”.
2. Select “Composite” from the data source wizard and click “Next”. Name the data source “OrderDetails_CMP.ds” and click “Finish”.
3. You will now be presented with the composite data source workspace. Drag and drop the “OrderDetails.ds” which will be the start of the workflow.
4. Drag and drop the “Filter” element onto the workspace, in front of “OrderDetails.ds”.
5. Click on the “Flow” connector to establish a flow between “OrderDetails.ds” and the filter element.

11.1. Add Parameter

1. Right click on the flow element and select “Properties”.
2. In the “Filter” tab, locate the “ID” column. Select “Matches” in the drop down menu under “When”. For the “Condition” field, input the following:

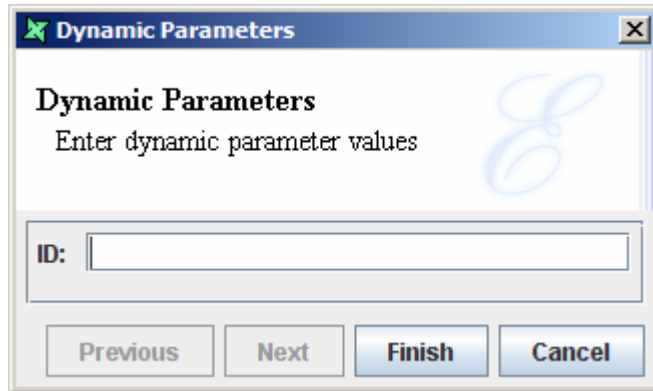
`{ID}`



The above input is a parameter. This parameter will pass in the required value (ID) to filter the data source accordingly. For example, if the value “1001” was passed in as a parameter, only rows of data containing “1001” in the “ID” column of the data source will be displayed.

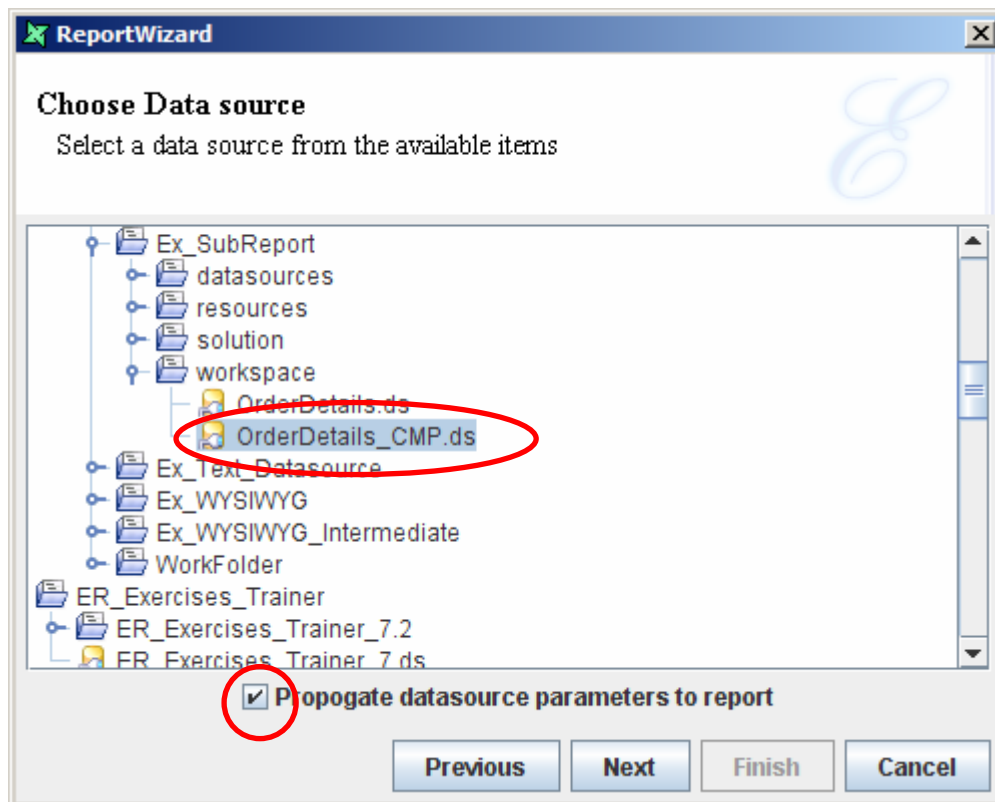
3. Click on the “Flow” element and draw a connection between “Filter” and “Result”. Right click on “Result” and select “View” to test the composite data source.

4. If set up correctly, the parameter pop up window would appear. Key in “1001” as an example and click on “Finish” to see the effects of the filter element.

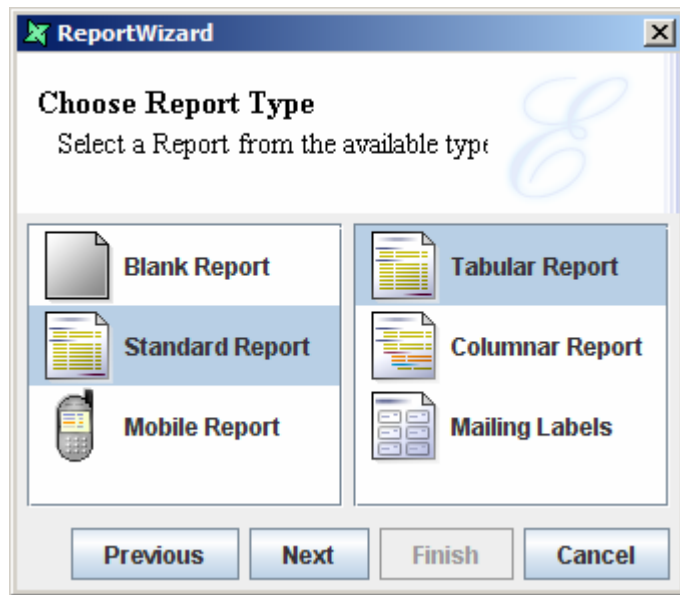


12. Create Sub Report Template

1. Right click on the “workspace” folder to create a new report template.
2. Name the sub report template “Customer-Order-Details” and click “Next”.
3. Select “OrderDetails_CMP.ds” as the data source for the sub report. Ensure the option “Propagate datasource parameters to report” is checked.



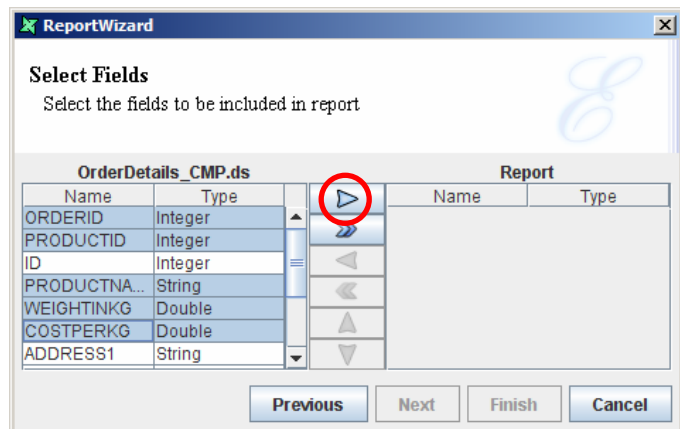
4. Under “Choose Report Type”, select “Standard Report” and “Tabular Report” and then click “Next”



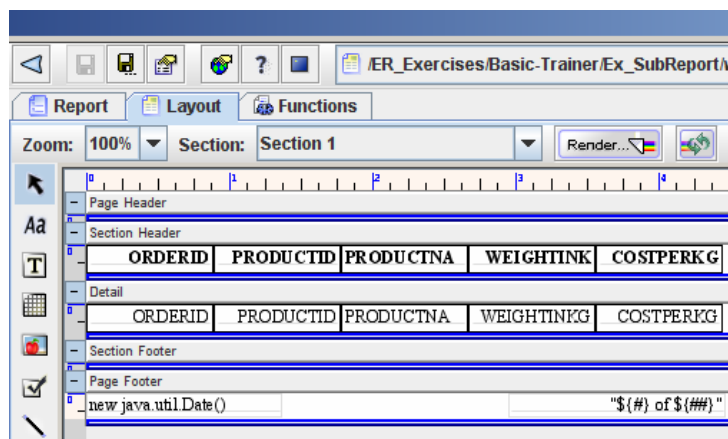
5. Hold “Ctrl” and select the following fields:

- ORDERID
- PRODUCTID
- PRODUCTNAME
- WEIGHTINGK
- COSTINGK

6. Click on the top arrow button to populate these columns in the report and click “Finish” when done.



7. If set up correctly, the report template would look like the example on the right.

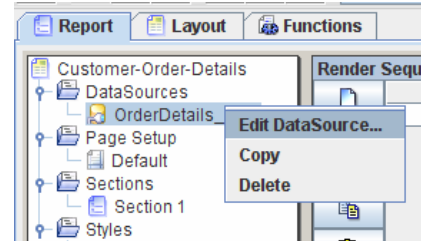


In the page footer, there are two data fields. “new java.util.Date()” will return the data and time when the template is rendered while “\${#} of \${##}” returns the page count when the template is rendered.

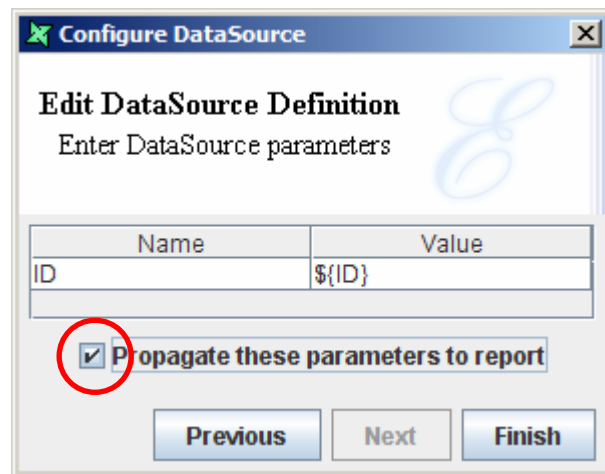
However, both data fields will not be rendered when this template is included in “Customer-Orders” as a sub report.

Parameters			
	Name	Value	Enabled
	ID	\${ID}	<input checked="" type="checkbox"/>

8. In addition, go to the “Report” tab and ensure that the parameters section has been populated. If not, right click on the data source and select “Edit DataSource”.

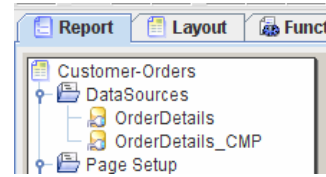


9. Click “Next” to go to the data source parameters section as shown on the right. Ensure that the option “Propagate these parameters to report” has been checked. Click “Finish” when done.



13. Add Sub Report Template

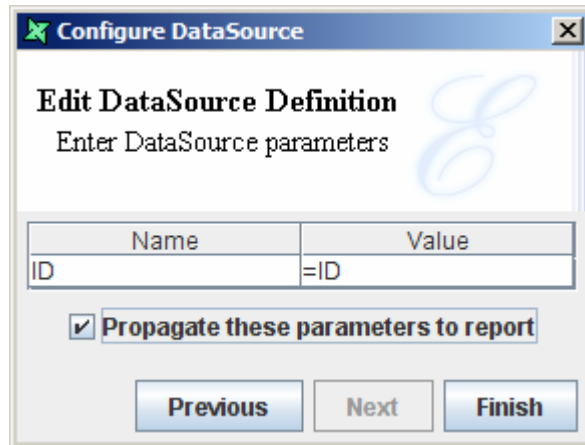
1. A primary data source (OrderDetails.ds) has been added to the report template. In the “Report” tab, look for the “DataSources” node in the template structure and add the composite (OrderDetails_CMP.ds) as the secondary data source.



2. At the “Enter Data Source Parameters” section, change the parameter “Value” from:

“\${ID}” to “=ID”

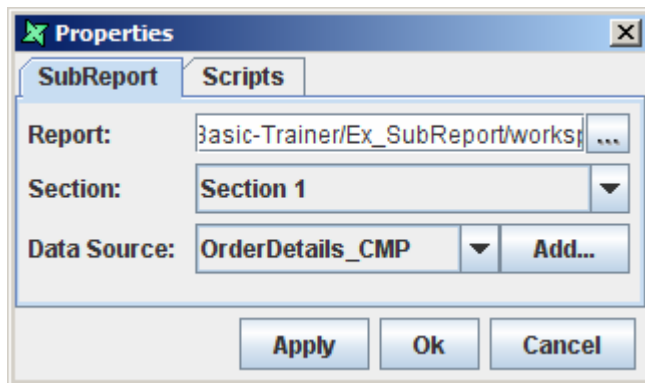
In doing so, the composite data source will search the report template for the value “ID” instead of prompting the user to input a parameter when rendering the report.



Also ensure that the option “Propagate these parameters to report” has been checked.

3. Click “Finish” when done.
4. Go to the layout tab. Extend “Group Footer: ID” to include additional space.
5. Click on the sub report element on the tool bar and click on “Group Footer: ID” to add the sub report.
6. For the sub report “Properties”, map the sub report template to the “workspace” path and ensure the secondary data source is used. Click “OK” when done.

The sub report will be rendered with the “\${ID}” parameter derived from the “Group Footer: ID” band. Go to the “Property



View” of “Group Footer: ID” and check the “Can Grow” and “Can Shrink” options. This section will now render accordingly based on the number of rows the sub report contains.

7. Render the report to see the results.